



REPUBLIC OF LITHUANIA

| | | | |
|--------|-----------------|----------------------------------|--------------------------------------|
| Phone: | +370 706 94 613 | SE "ORO NAVIGACIJA" | AIP SUP: 006/2022 |
| AFS: | EYVNYOYX | Aeronautical Information Service | Effective Date: 24-Mar-2022 |
| URL: | www.ans.lt | Balio Karvelio Str. 25 | End Date: |
| Email: | ais@ans.lt | LT-02184 Vilnius, Lithuania | Publication Date: 18-Mar-2022 |

S 006. SIAULIAI AERODROME INSTRUMENT APPROACH CHARTS FOR MILITARY AIRCRAFT

The following AIP subsections affected: EYSA AD 2.24.

This AIP supplement provides information of new Siauliai aerodrome Instrument Approach Charts RWY 14L/32R and RWY 14R/32L for military aircraft (see Appendixes).

Instrument Approach charts for military aircraft (AIP EYSA AD 2.24) are withdrawn:

- EYSA AD 2.24-60 Instrument Approach Chart for Military ACFT – TACAN to ILS or LOC RWY 14L
- EYSA AD 2.24-61 Instrument Approach Chart for Military ACFT – TACAN to ILS or LOC RWY 32R
- EYSA AD 2.24-62 Instrument Approach Chart for Military ACFT – VOR RWY 14R
- EYSA AD 2.24-63 Instrument Approach Chart for Military ACFT – VOR RWY 32L
- EYSA AD 2.24-64 Instrument Approach Chart for Military ACFT – TACAN RWY 14L
- EYSA AD 2.24-65 Instrument Approach Chart for Military ACFT – TACAN RWY 32R
- EYSA AD 2.24-66 Instrument Approach Chart for Military ACFT – TACAN RWY 14R
- EYSA AD 2.24-67 Instrument Approach Chart for Military ACFT – TACAN RWY 32L

New charts:

- Appendix 1. Instrument Approach Chart for Military ACFT – ILS Z or LOC Z RWY 14L (MIL)
- Appendix 2. Instrument Approach Chart for Military ACFT – ILS Z or LOC Z RWY 32R (MIL)
- Appendix 3. Instrument Approach Chart for Military ACFT – ILS Y or LOC Y RWY 14L (MIL)
- Appendix 4. Instrument Approach Chart for Military ACFT – ILS Y or LOC Y RWY 32R (MIL)
- Appendix 5. Instrument Approach Chart for Military ACFT – TACAN RWY 14L
- Appendix 6. Instrument Approach Chart for Military ACFT – TACAN RWY 32R
- Appendix 7. Instrument Approach Chart for Military ACFT – VOR RWY 14R
- Appendix 8. Instrument Approach Chart for Military ACFT – VOR RWY 32L
- Appendix 9. Instrument Approach Chart for Military ACFT – TACAN RWY 14R
- Appendix 10. Instrument Approach Chart for Military ACFT – TACAN RWY 32L

This AIP supplement will be cancelled when the contents are incorporated into AIP.

-END-

THIS PAGE INTENTIONALLY LEFT BLANK

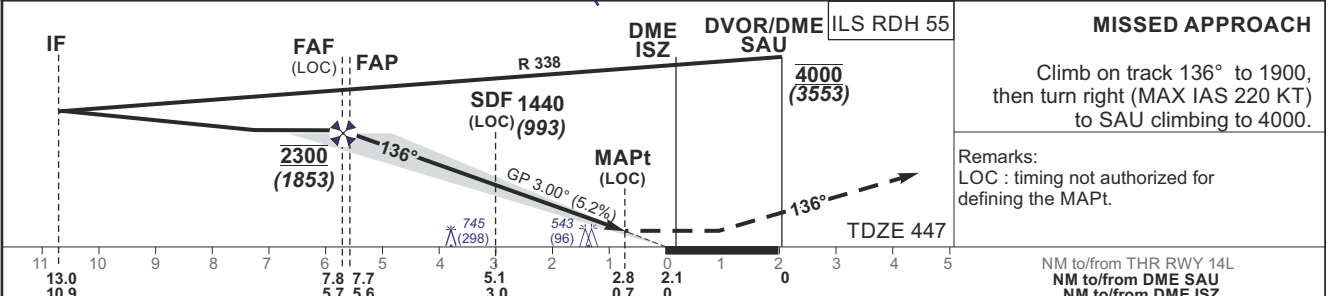
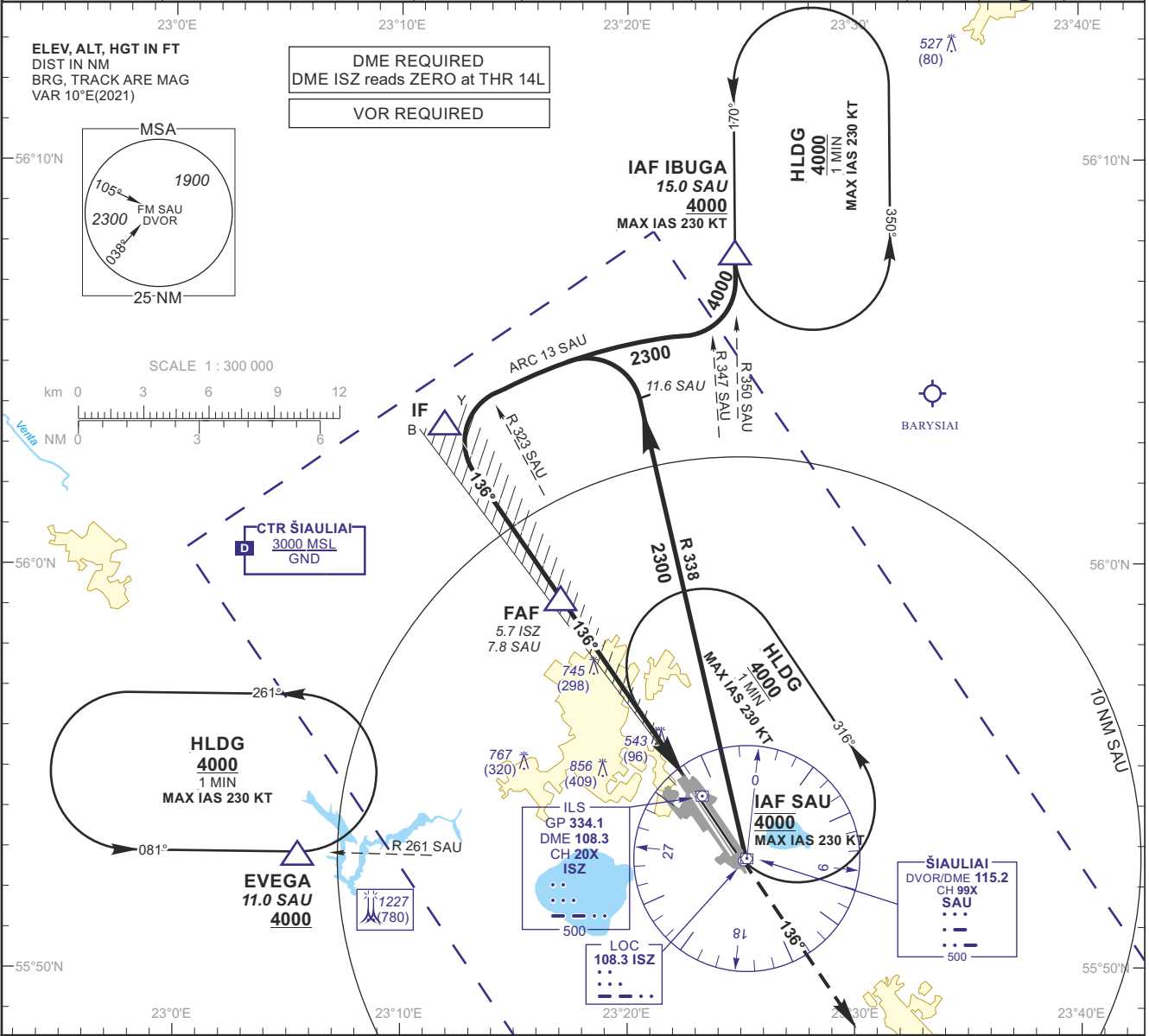
INSTRUMENT APPROACH CHART
for MILITARY ACFT
 TRANSITION LEVEL By ATC
 TRANSITION ALT **5000(4553)**

AERODROME ELEV 447
 HEIGHTS RELATED TO
 THR RWY 14L - ELEV 447

TWR 120.405
 ATIS 120.755

ŠIAULIAI
ILS Z or LOC Z
RWY 14L (MIL)

| | | | | | | | |
|-----------------------|--------------------|-----------------|----------------------------|---------------------------------------|-------------|-------------|--------------|
| DVOR/DME SAU CH99X | APP COURSE 136° | FAF ALT 2300 | Descent GP 3.00° (5.2%) | DA ref. to minimums MDA 830 | TDZE 447 | ALS (BP) | LDA 11483 |
|-----------------------|--------------------|-----------------|----------------------------|---------------------------------------|-------------|-------------|--------------|



| | | | | | | | | | | | | | |
|------------------------|---------|------|------|------|------|------|------|----------|--------|--------|-------|-------|-------|
| GS | Kts | 80 | 100 | 120 | 140 | 160 | 180 | DIST ISZ | 5 | 4 | 3 | 2 | 1 |
| FAF - MAPt 5.0 NM | min:sec | 3:45 | 3:00 | 2:30 | 2:09 | 1:53 | 1:40 | Altitude | 2080 | 1760 | 1440 | 1130 | 820 |
| Rate of descent (5.2%) | ft/min | 415 | 520 | 625 | 730 | 835 | 940 | Height | (1633) | (1313) | (993) | (683) | (373) |

| | STRAIGHT-IN APPROACH | | | | | | | | | CIRCLING APPROACH | | |
|---|----------------------|----------|-----------|-----------|-----------|-----------|-----------------------------|-----------|-----------|-------------------|------------|-------|
| | ILS CAT I | | | LOC | | | LOC (When SDF not received) | | | MDA(H) | Visibility | |
| | DA(H) | Full | ALS out | MDA(H) | Full | ALS out | MDA(H) | Full | ALS out | | | |
| A | 647 (200) | RVR 550m | RVR 1200m | 830 (380) | RVR 1000m | RVR 1500m | 1000 (550) | RVR 2000m | RVR 2700m | 880 (440) | 1500m | |
| B | | | | | | | | | | 1160 (710) | 2400m | |
| C | | | | | | | | | | 1260 (810) | RVR 2900m | 3600m |
| D | | | | | | | | | | | 1350 (910) | 4300m |
| E | | | | | | | | | | 651 (204) | | |

INSTRUMENT APPROACH CHART
for MILITARY ACFT
TRANSITION LEVEL By ATC
TRANSITION ALT **5000(4553)**

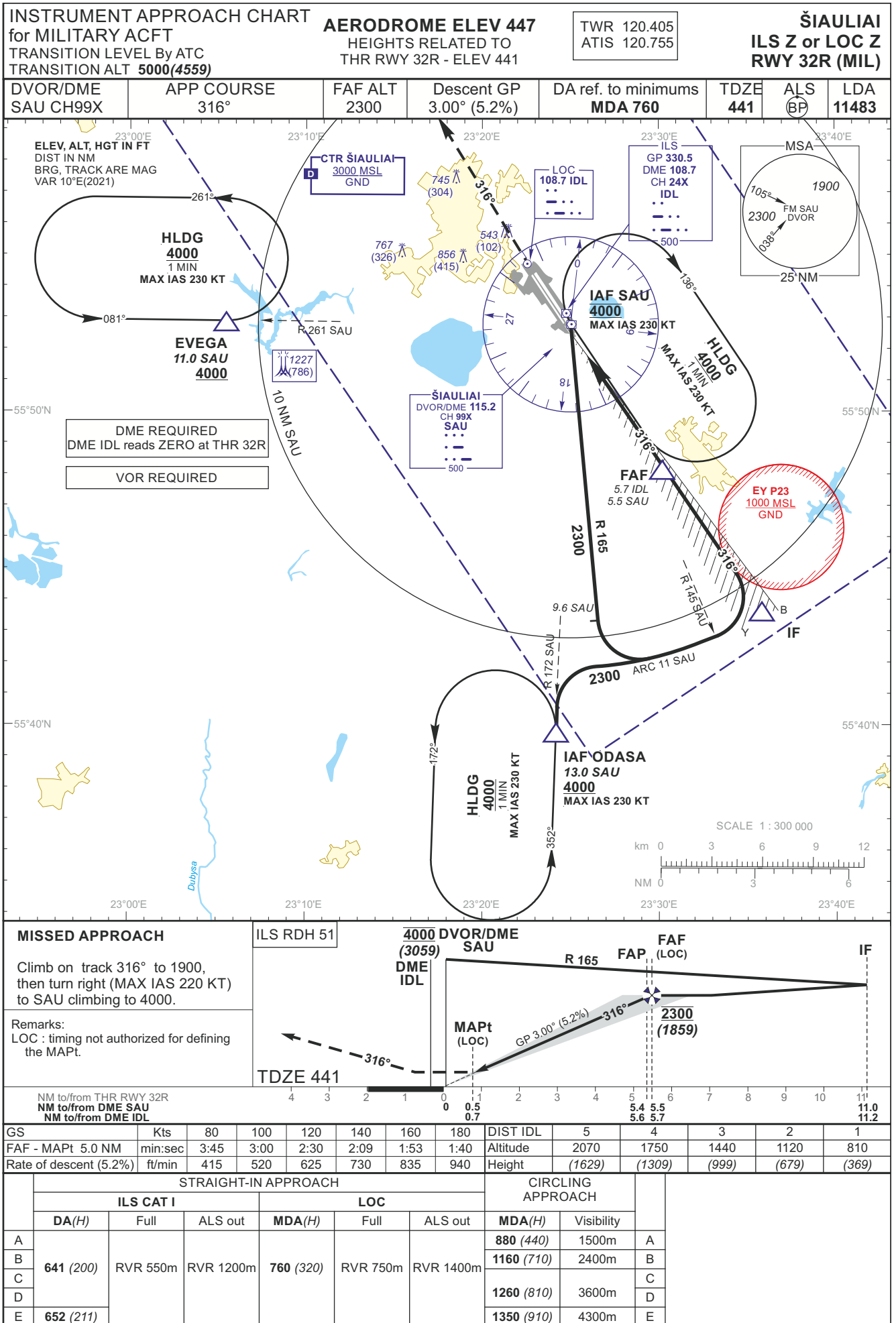
AERODROME ELEV 447
HEIGHTS RELATED TO
THR RWY 14L - ELEV 447

TWR 120.405
ATIS 120.755

ŠIAULIAI
ILS Z or LOC Z
RWY 14L (MIL)

TABULAR DESCRIPTION

| ILS or LOC INSTRUMENT APPROACH for MILITARY ACFT from IAFs (SAU, IBUGA) | | |
|---|----------------------|---|
| FIX/POINTS | COORDINATES | FIX FORMATION |
| EVEGA (HLDG) | 55 52.87N 023 05.45E | BRG 081.02° / 11.00 NM SAU |
| IBUGA (IAF) | 56 07.72N 023 24.76E | BRG 169.73° / 15.00 NM SAU |
| SAU (IAF) | 55 52.74N 023 24.98E | |
| IF | 56 03.45N 023 11.91E | BRG 136.35° / 10.92 NM ISZ ; 13.01 NM SAU |
| FAF | 55 59.14N 023 17.09E | BRG 136.35° / 5.71 NM ISZ ; 7.80 NM SAU |
| FAP | 55 59.02N 023 17.24E | BRG 136.35° / 5.56 NM ISZ ; 7.65 NM SAU |
| SDF | 55 56.89N 023 19.80E | BRG 136.35° / 2.99 NM ISZ ; 5.08 NM SAU |
| MAPt | 55 55.00N 023 22.07E | BRG 136.35° / 0.70 NM ISZ ; 2.79 NM SAU |
| THR RWY 14L | 55 54.41N 023 22.76E | |
| DME ISZ | 55 54.30N 023 23.04E | |
| LOC ISZ | 55 52.68N 023 24.84E | |
| Final approach (LOC) descent angle: 3.00° | | |



INSTRUMENT APPROACH CHART
for MILITARY ACFT
TRANSITION LEVEL By ATC
TRANSITION ALT **5000(4559)**

AERODROME ELEV 447
HEIGHTS RELATED TO
THR RWY 32R - ELEV 441

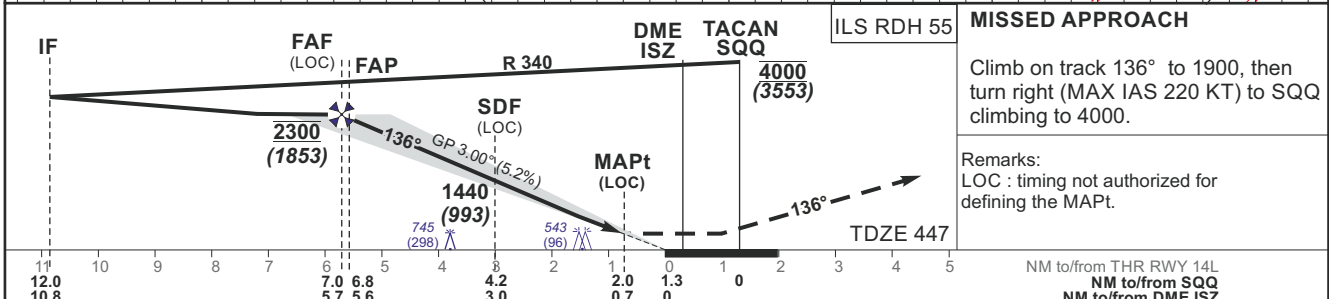
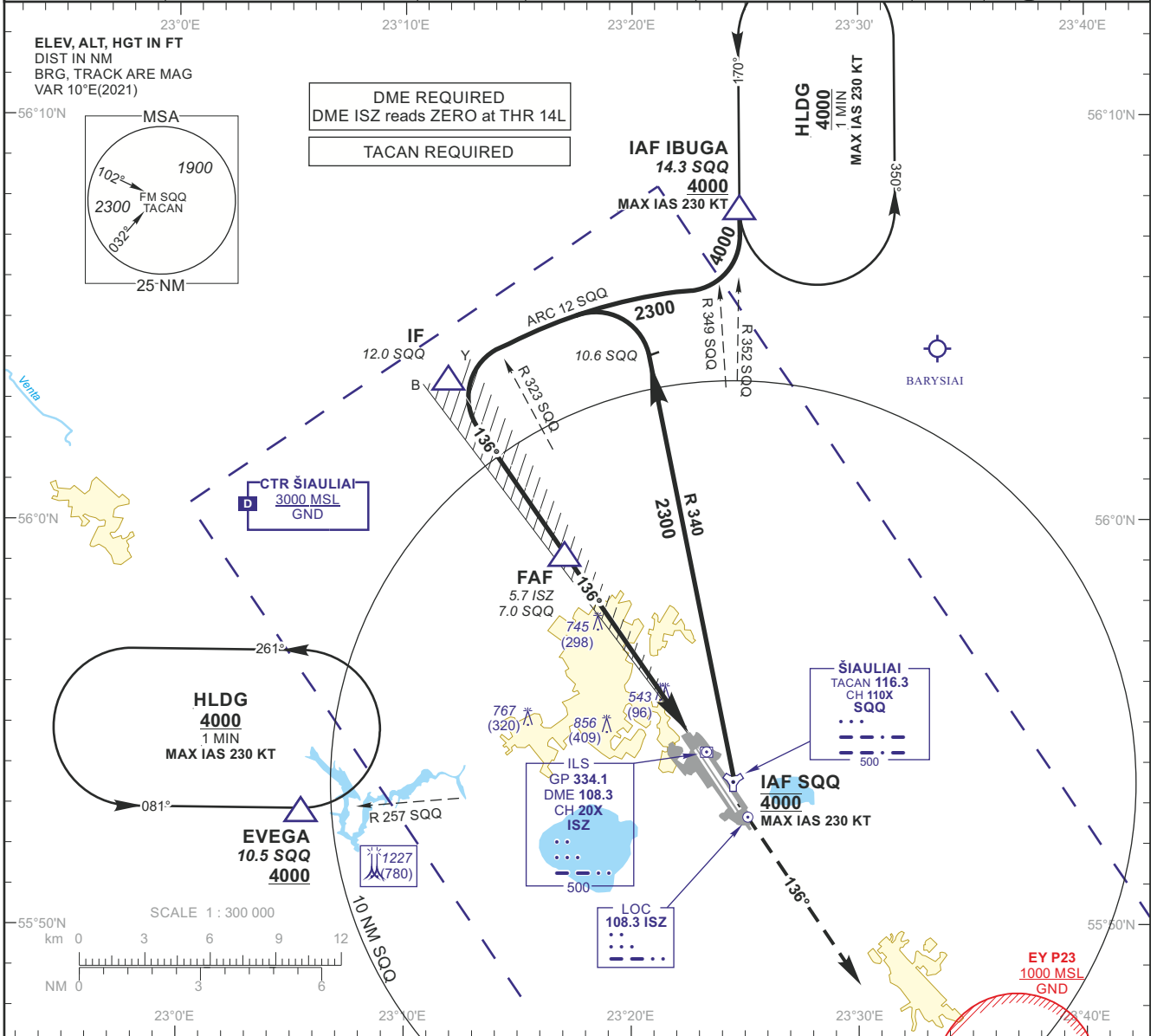
TWR 120.405
ATIS 120.755

ŠIAULIAI
ILS Z or LOC Z
RWY 32R (MIL)

TABULAR DESCRIPTION

| ILS or LOC INSTRUMENT APPROACH for MILITARY ACFT from IAFs (SAU, ODASA) | | |
|---|----------------------|---|
| FIX/POINTS | COORDINATES | FIX FORMATION |
| EVEGA (HLDG) | 55 52.87N 023 05.45E | BRG 081.02° / 11.00 NM SAU |
| ODASA (IAF) | 56 07.72N 023 24.76E | BRG 352.25° / 13.00 NM SAU |
| SAU (IAF) | 55 52.74N 023 24.98E | |
| IF | 55 43.56N 023 35.68E | BRG 316.29° / 11.20 NM IDL ; 11.00 NM SAU |
| FAF | 55 48.10N 023 30.30E | BRG 316.29° / 5.73 NM IDL ; 5.53 NM SAU |
| FAP | 55 48.21N 023 30.16E | BRG 316.29° / 5.59 NM IDL ; 5.40 NM SAU |
| MAPt | 55 52.27N 023 25.33E | BRG 316.29° / 0.70 NM IDL ; 0.51 NM SAU |
| THR RWY 32R | 55 52.85N 023 24.64E | |
| DME IDL | 55 53.02N 023 24.58E | |
| LOC IDL | 55 54.58N 023 22.57E | |
| Final approach (LOC) descent angle: 3.00° | | |

| | | | | | | | | | | |
|---|--------------------|-----------------|----------------------------|---|-------------|-----------------------------|--------------|--|--|--|
| INSTRUMENT APPROACH CHART for MILITARY ACFT TRANSITION LEVEL By ATC TRANSITION ALT 5000(4553) | | | | AERODROME ELEV 447 HEIGHTS RELATED TO THR RWY 14L - ELEV 447 | | TWR 120.405 ATIS 120.755 | | ŠIAULIAI ILS Y or LOC Y RWY 14L (MIL) | | |
| TACAN SQQ CH110X | APP COURSE 136° | FAF ALT 2300 | Descent GP 3.00° (5.2%) | DA ref. to minimums MDA 830 | TDZE 447 | ALS Ⓟ | LDA 11483 | | | |



| | | | | | | | | | | | | | |
|------------------------|---------|------|------|------|------|------|------|----------|--------|--------|-------|-------|-------|
| GS | Kts | 80 | 100 | 120 | 140 | 160 | 180 | DIST ISZ | 5 | 4 | 3 | 2 | 1 |
| FAF - MAPt 5.0 NM | min:sec | 3:45 | 3:00 | 2:30 | 2:09 | 1:53 | 1:40 | Altitude | 2080 | 1760 | 1440 | 1130 | 820 |
| Rate of descent (5.2%) | ft/min | 415 | 520 | 625 | 730 | 835 | 940 | Height | (1633) | (1313) | (993) | (683) | (373) |

| | STRAIGHT-IN APPROACH | | | | | | | | | CIRCLING APPROACH | | | |
|---|----------------------|----------|-----------|-----------|-----------|---------|-----------------------------|-----------|---------|-------------------|------------|-------|---|
| | ILS CAT I | | | LOC | | | LOC (When SDF not received) | | | MDA(H) | Visibility | | |
| | DA(H) | Full | ALS out | MDA(H) | Full | ALS out | MDA(H) | Full | ALS out | | | | |
| A | | | | | | | | | | | 880 (440) | 1500m | A |
| B | 647 (200) | RVR 550m | RVR 1200m | 830 (380) | RVR 1000m | | | RVR 1500m | | | 1160 (710) | 2400m | B |
| C | | | | | | | | | | | | | C |
| D | | | | | | | | RVR 1700m | | | 1260 (810) | 3600m | D |
| E | 651 (204) | | | | | | | | | | 1350 (910) | 4300m | E |

MISSED APPROACH
Climb on track 136° to 1900, then turn right (MAX IAS 220 KT) to SQQ climbing to 4000.
Remarks:
LOC : timing not authorized for defining the MAPt.

INSTRUMENT APPROACH CHART
for MILITARY ACFT
TRANSITION LEVEL By ATC
TRANSITION ALT **5000(4553)**

AERODROME ELEV 447
HEIGHTS RELATED TO
THR RWY 14L - ELEV 447

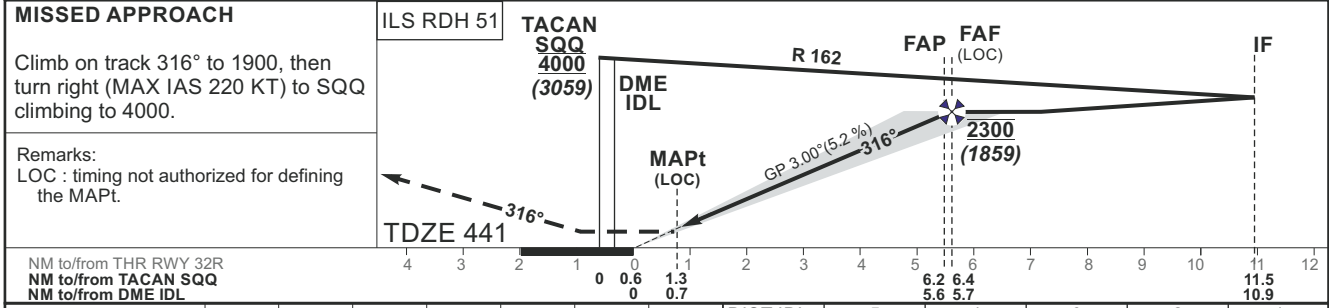
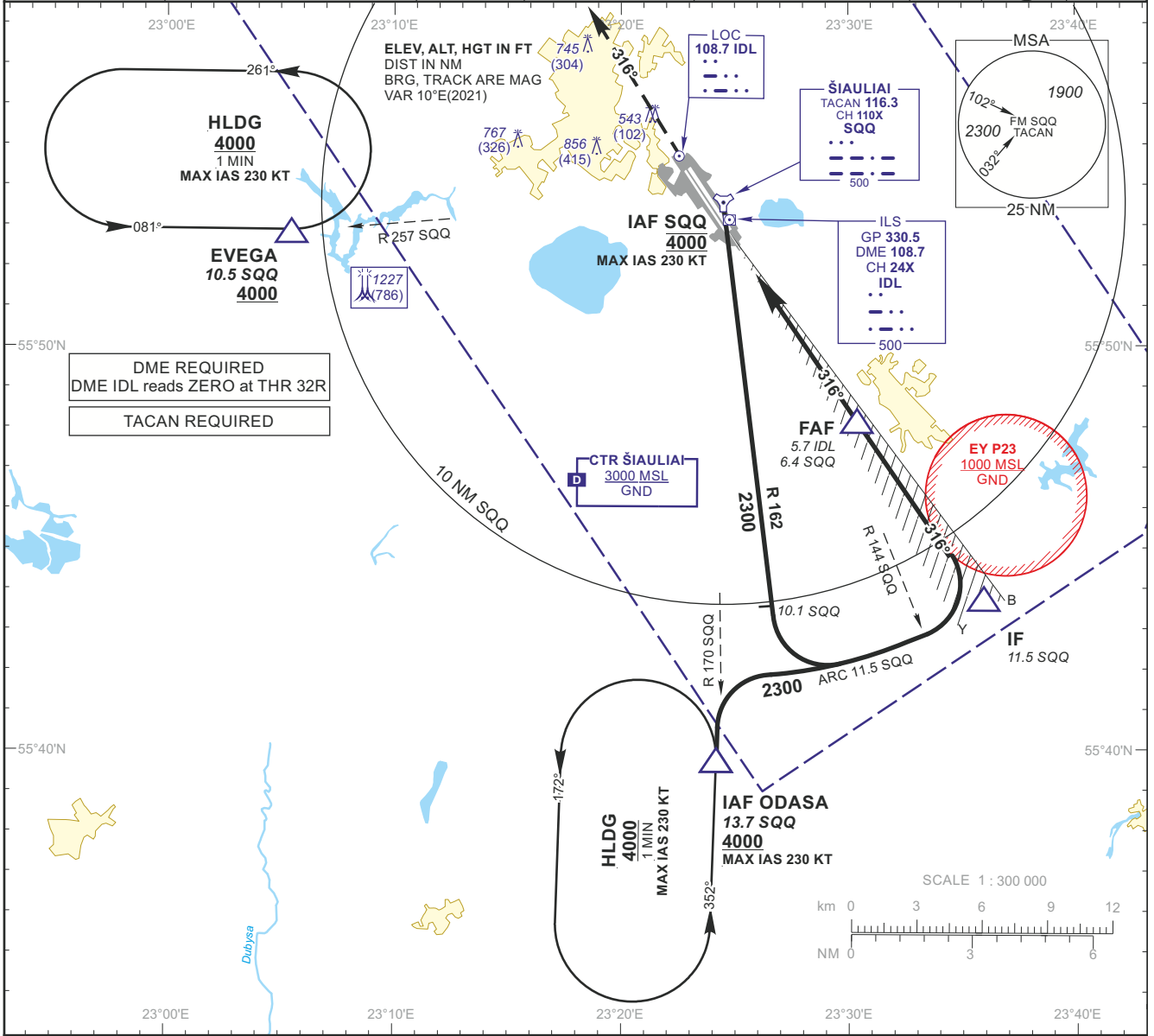
TWR 120.405
ATIS 120.755

ŠIAULIAI
ILS Y or LOC Y
RWY 14L (MIL)

TABULAR DESCRIPTION

| ILS or LOC INSTRUMENT APPROACH for MILITARY ACFT from IAFs (SQQ, IBUGA) | | |
|---|----------------------|---|
| FIX/POINTS | COORDINATES | FIX FORMATION |
| EVEGA (HLDG) | 55 52.87N 023 05.45E | BRG 077.32° / 10.54 NM SQQ |
| IBUGA (IAF) | 56 07.72N 023 24.76E | BRG 171.58° / 14.32 NM SQQ |
| SQQ TACAN (IAF) | 55 53.43N 023 24.14E | |
| IF | 56 03.31N 023 12.07E | BRG 136.35° / 10.75 NM ISZ ; 12.00 NM SQQ |
| FAF | 55 59.14N 023 17.09E | BRG 136.35° / 5.71 NM ISZ ; 6.97 NM SQQ |
| FAP | 55 59.02N 023 17.24E | BRG 136.35° / 5.56 NM ISZ ; 6.82 NM SQQ |
| SDF | 55 56.89N 023 19.80E | BRG 136.35° / 2.99 NM ISZ ; 4.24 NM SQQ |
| MAPt | 55 55.00N 023 22.07E | BRG 136.35° / 0.70 NM ISZ ; 1.96 NM SQQ |
| THR RWY 14L | 55 54.41N 023 22.76E | |
| DME ISZ | 55 54.30N 023 23.04E | |
| LOC ISZ | 55 52.68N 023 24.84E | |
| Final approach (LOC) descent angle: 3.00° | | |

| | | | | | | | |
|---|--------------------|---|----------------------------|---------------------------------------|-------------|--|--------------|
| INSTRUMENT APPROACH CHART for MILITARY ACFT TRANSITION LEVEL By ATC TRANSITION ALT 5000(4559) | | AERODROME ELEV 447 HEIGHTS RELATED TO THR RWY 32R - ELEV 441 | | TWR 120.405 ATIS 120.755 | | ŠIAULIAI ILS Y or LOC Y RWY 32R (MIL) | |
| TACAN SQQ CH110X | APP COURSE 316° | FAF ALT 2300 | Descent GP 3.00° (5.2%) | DA ref. to minimums MDA 760 | TDZE 441 | ALS (BP) | LDA 11483 |



| GS | Kts | 80 | 100 | 120 | 140 | 160 | 180 | DIST IDL | 5 | 4 | 3 | 2 | 1 |
|------------------------|---------|------|------|------|------|------|------|----------|--------|--------|-------|-------|-------|
| FAF - MAPt 5.0 NM | min:sec | 3:45 | 3:00 | 2:30 | 2:09 | 1:53 | 1:40 | Altitude | 2070 | 1750 | 1440 | 1120 | 810 |
| Rate of descent (5.2%) | ft/min | 415 | 520 | 625 | 730 | 835 | 940 | Height | (1629) | (1309) | (999) | (679) | (369) |

| | STRAIGHT-IN APPROACH | | | | | | CIRCLING APPROACH | | |
|---|----------------------|----------|-----------|-----------|----------|-----------|-------------------|------------|---|
| | ILS CAT I | | | LOC | | | MDA(H) | Visibility | |
| | DA(H) | Full | ALS out | MDA(H) | Full | ALS out | | | |
| A | 641 (200) | RVR 550m | RVR 1200m | 760 (320) | RVR 750m | RVR 1400m | 880 (440) | 1500m | A |
| B | | | | | | | 1160 (710) | 2400m | B |
| C | | | | | | | 1260 (810) | 3600m | C |
| D | | | | | | | 1350 (910) | 4300m | D |
| E | | | | | | | 652 (211) | | |

INSTRUMENT APPROACH CHART
for MILITARY ACFT
TRANSITION LEVEL By ATC
TRANSITION ALT **5000(4559)**

AERODROME ELEV 447
HEIGHTS RELATED TO
THR RWY 32R - ELEV 441

| |
|--------------|
| TWR 120.405 |
| ATIS 120.755 |

ŠIAULIAI
ILS Y or LOC Y
RWY 32R (MIL)

TABULAR DESCRIPTION

| ILS or LOC INSTRUMENT APPROACH for MILITARY ACFT from IAFs (SQQ, ODASA) | | |
|---|----------------------|---|
| FIX/POINTS | COORDINATES | FIX FORMATION |
| EVEGA (HLDG) | 55 52.87N 023 05.45E | BRG 077.32° / 10.54 NM SQQ |
| ODASA (IAF) | 56 07.72N 023 24.76E | BRG 350.16° / 13.68 NM SQQ |
| SQQ TACAN (IAF) | 55 53.43N 023 24.14E | |
| IF | 55 43.84N 023 35.35E | BRG 316.29° / 10.87 NM IDL ; 11.50 NM SQQ |
| FAF | 55 48.10N 023 30.30E | BRG 316.29° / 5.73 NM IDL ; 6.37 NM SQQ |
| FAP | 55 48.21N 023 30.16E | BRG 316.29° / 5.59 NM IDL ; 6.23 NM SQQ |
| MAPt | 55 52.27N 023 25.33E | BRG 316.29° / 0.70 NM IDL ; 1.34 NM SQQ |
| THR RWY 32R | 55 52.85N 023 24.64E | |
| DME IDL | 55 53.02N 023 24.58E | |
| LOC IDL | 55 54.58N 023 22.57E | |
| Final approach (LOC) descent angle: 3.00° | | |

INSTRUMENT APPROACH CHART
for MILITARY ACFT
TRANSITION LEVEL By ATC
TRANSITION ALT **5000(4553)**

AERODROME ELEV 447
HEIGHTS RELATED TO AD ELEV
THR RWY 14L - ELEV 447

| |
|--------------|
| TWR 120.405 |
| ATIS 120.755 |

ŠIAULIAI
TACAN RWY 14L

TABULAR DESCRIPTION

| TACAN INSTRUMENT APPROACH for MILITARY ACFT from IAFs (SQQ, IBUGA) | | |
|--|----------------------|----------------------------|
| FIX/POINTS | COORDINATES | FIX FORMATION |
| EVEGA (HLDG) | 55 52.87N 023 05.45E | BRG 077.32° / 10.54 NM SQQ |
| IBUGA (IAF) | 56 07.72N 023 24.76E | BRG 171.58° / 14.32 NM SQQ |
| SQQ TACAN (IAF) | 55 53.43N 023 24.14E | |
| IF | 56 03.05N 023 11.41E | BRG 133.70° / 12.01 NM SQQ |
| FAF | 55 59.01N 023 16.76E | BRG 133.70° / 6.97 NM SQQ |
| SDF | 55 56.07N 023 20.66E | BRG 133.70° / 3.3 NM SQQ |
| MAPt | 55 54.74N 023 22.42E | BRG 133.70° / 1.63 NM SQQ |
| THR RWY 14L | 55 54.41N 023 22.76E | |
| Final approach descent angle: 3.00° | | |

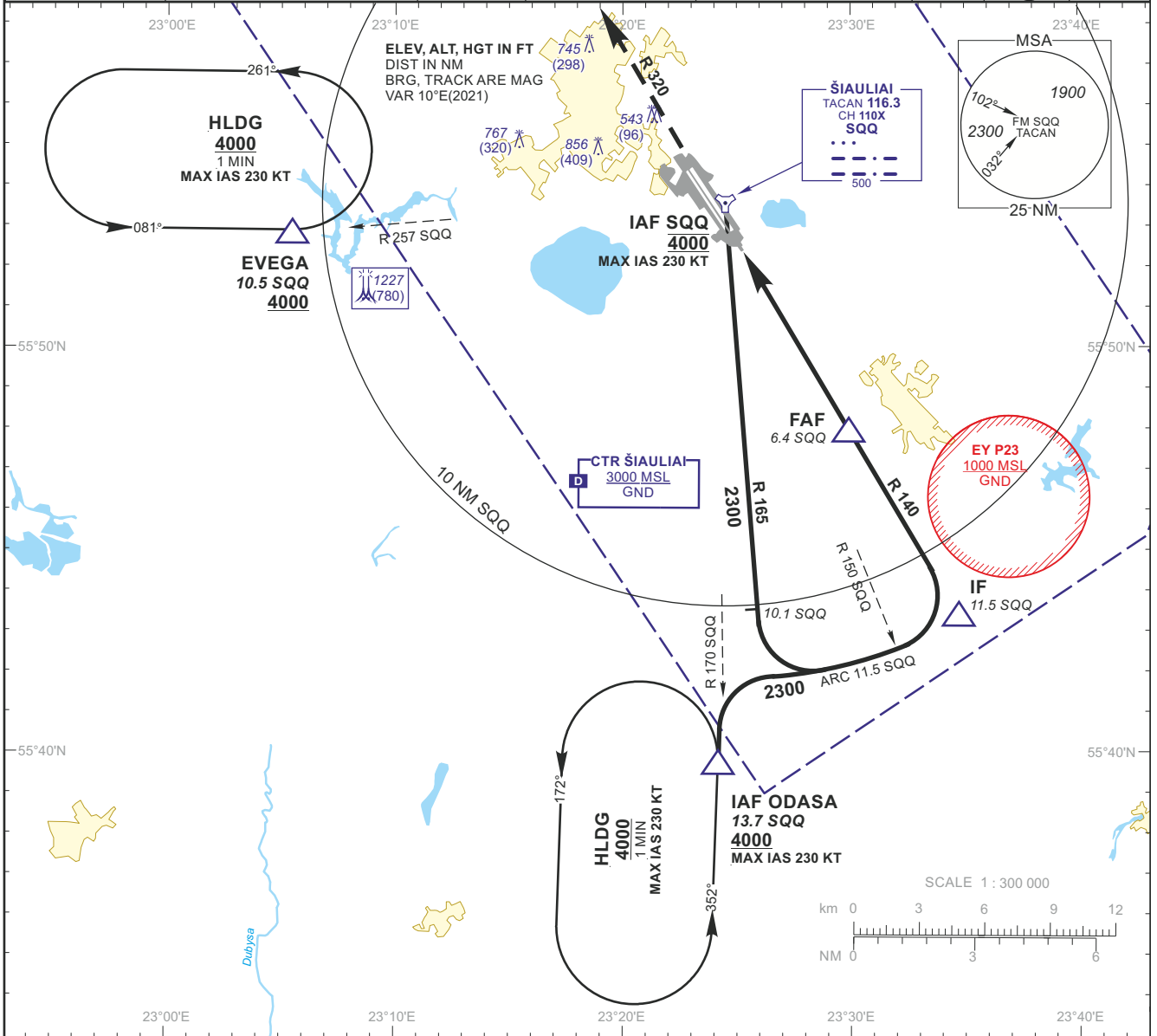
INSTRUMENT APPROACH CHART
for MILITARY ACFT
TRANSITION LEVEL By ATC
TRANSITION ALT **5000(4553)**

AERODROME ELEV 447
HEIGHTS RELATED TO AD ELEV
THR RWY 32R - ELEV 441

TWR 120.405
ATIS 120.755

ŠIAULIAI
TACAN RWY 32R

| | | | | | | | |
|---------------------|--------------------|-----------------|----------------------------|---------|-------------|-----------|--------------|
| TACAN SQQ CH110X | APP COURSE 320° | FAF ALT 2300 | Descent GP 5.2% (3.00°) | MDA 800 | TDZE 441 | ALS BP | LDA 11483 |
|---------------------|--------------------|-----------------|----------------------------|---------|-------------|-----------|--------------|

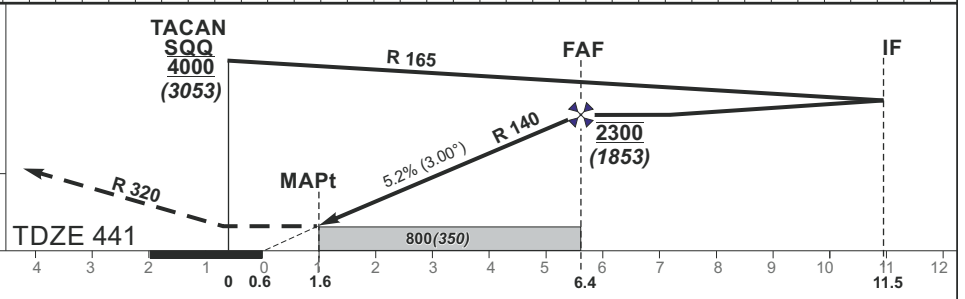


MISSED APPROACH

Climb via SQQ, then on R 320 to 2000, then turn right with MIN bank angle 25°(MAX IAS 230 KT) to SQQ climbing to 4000.

Remarks:
Timing not authorized for defining the MAPt.

NM to/from THR RWY 32R
NM to/from TACAN SQQ



| GS | Kts | 80 | 100 | 120 | 140 | 160 | 180 | DIST SQQ | 6 | 5 | 4 | 3 | 2 |
|------------------------|---------|------|------|------|------|------|------|----------|--------|--------|--------|-------|-------|
| FAF - MAPt 4.8 NM | min:sec | 3:36 | 2:53 | 2:24 | 2:03 | 1:48 | 1:36 | Altitude | 2190 | 1870 | 1560 | 1240 | 920 |
| Rate of descent (5.2%) | ft/min | 415 | 520 | 625 | 730 | 835 | 940 | Height | (1743) | (1423) | (1113) | (793) | (473) |

| | STRAIGHT-IN APPROACH | | | CIRCLING APPROACH | | | |
|---|----------------------|----------|-----------|-------------------|------------|-------|---|
| | TACAN | | | | | | |
| | MDA(H) | Full | ALS out | MDA(H) | Visibility | | |
| A | 800 (350) | RVR 900m | RVR 1500m | 880 (440) | 1500m | A | |
| B | | | | 1160 (710) | 2400m | B | |
| C | | | | RVR 1600m | 1260 (810) | 3600m | C |
| D | | | | | 1350 (910) | 4300m | D |
| E | | | | | | E | |

INSTRUMENT APPROACH CHART
for MILITARY ACFT
TRANSITION LEVEL By ATC
TRANSITION ALT **5000(4553)**

AERODROME ELEV 447
HEIGHTS RELATED TO AD ELEV
THR RWY 32R - ELEV 441

| |
|--------------|
| TWR 120.405 |
| ATIS 120.755 |

ŠIAULIAI
TACAN RWY 32R

TABULAR DESCRIPTION

| TACAN INSTRUMENT APPROACH for MILITARY ACFT from IAFs (SQQ, ODASA) | | |
|--|----------------------|----------------------------|
| FIX/POINTS | COORDINATES | FIX FORMATION |
| EVEGA (HLDG) | 55 52.87N 023 05.45E | BRG 077.32° / 10.54 NM SQQ |
| ODASA (IAF) | 56 07.72N 023 24.76E | BRG 350.16° / 13.68 NM SQQ |
| SQQ TACAN (IAF) | 55 53.43N 023 24.14E | |
| IF | 55 43.49N 023 34.36E | BRG 320.05° / 11.50 NM SQQ |
| FAF | 55 47.93N 023 29.81E | BRG 320.05° / 6.37 NM SQQ |
| MAPt | 55 52.04N 023 25.58E | BRG 320.05° / 1.61 NM SQQ |
| THR RWY 32R | 55 52.85N 023 24.64E | |
| Final approach descent angle: 3.00° | | |

INSTRUMENT APPROACH CHART
for MILITARY ACFT
TRANSITION LEVEL By ATC
TRANSITION ALT **5000(4553)**

AERODROME ELEV 447
HEIGHTS RELATED TO AD ELEV
THR RWY 14R ELEV 440

| |
|--------------|
| TWR 120.405 |
| ATIS 120.755 |

**ŠIAULIAI
VOR RWY 14R**

TABULAR DESCRIPTION

| VOR INSTRUMENT APPROACH for MILITARY ACFT from IAFs (SAU, IBUGA) | | |
|--|----------------------|----------------------------|
| FIX/POINTS | COORDINATES | FIX FORMATION |
| EVEGA (HLDG) | 55 52.87N 023 05.45E | BRG 081.02° / 11.00 NM SAU |
| IBUGA (IAF) | 56 07.72N 023 24.76E | BRG 169.73° / 15.00 NM SAU |
| SAU (IAF) | 55 52.74N 023 24.98E | |
| IF | 56 02.85N 023 10.47E | BRG 131.46° / 13.01 NM SAU |
| FAF | 55 58.75N 023 16.38E | BRG 131.46° / 7.72 NM SAU |
| SDF | 55 55.79N 023 20.62E | BRG 131.46° / 3.92 NM SAU |
| MAPt | 55 54.90N 023 21.90E | BRG 131.46° / 2.77 NM SAU |
| THR RWY 14R | 55 54.25N 023 22.68E | |
| Final approach descent angle: 3.00° | | |

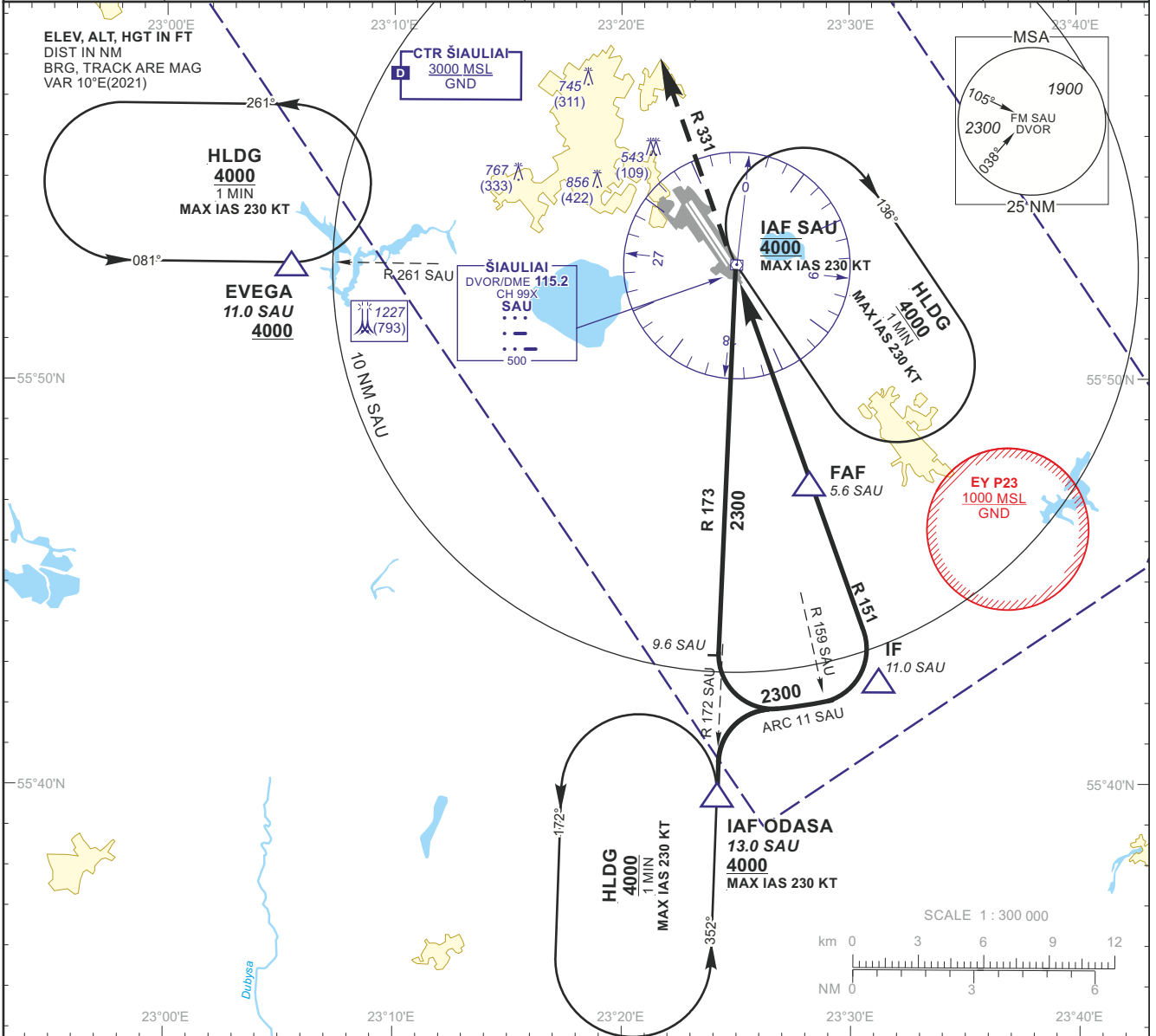
INSTRUMENT APPROACH CHART
for MILITARY ACFT
TRANSITION LEVEL By ATC
TRANSITION ALT **5000(4566)**

AERODROME ELEV 447
HEIGHTS RELATED TO
THR RWY 32L - ELEV 434

TWR 120.405
ATIS 120.755

ŠIAULIAI
VOR RWY 32L

| | | | | | | | |
|-----------------------|--------------------|-----------------|----------------------------|----------|-------------|------------|--------------|
| DVOR/DME SAU CH99X | APP COURSE 331° | FAF ALT 2300 | Descent GP 5.2% (3.00°) | MDA 1050 | TDZE 434 | ALS OUT | LDA 10643 |
|-----------------------|--------------------|-----------------|----------------------------|----------|-------------|------------|--------------|

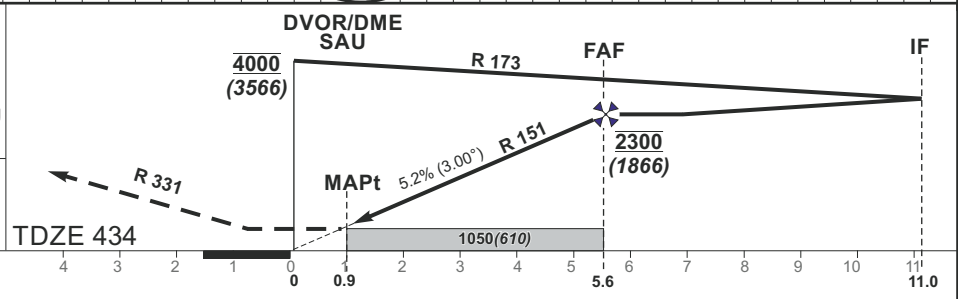


MISSED APPROACH

Climb via SAU, then on R 331 to 2000, then turn right with MIN bank angle 25° (MAX IAS 230 KT) to SAU climbing to 4000.

Remarks:
Timing not authorized for defining the MAPt.

NM to/from THR RWY 32L
NM to/from DME SAU



| GS | Kts | 80 | 100 | 120 | 140 | 160 | 180 | DIST SAU | 5 | 4 | 3 | 2 |
|------------------------|---------|------|------|------|------|------|------|----------|--------|--------|--------|-------|
| FAF - MAPt 4.7 NM | min:sec | 3:31 | 2:49 | 2:21 | 2:01 | 1:46 | 1:34 | Altitude | 2130 | 1810 | 1500 | 1180 |
| Rate of descent (5.2%) | ft/min | 415 | 520 | 625 | 730 | 835 | 940 | Height | (1696) | (1376) | (1066) | (746) |

| | STRAIGHT-IN APPROACH | | | | CIRCLING APPROACH | | A |
|---|----------------------|-----------|-----------|--------|-------------------|------------|---|
| | VOR | | | | MDA(H) | Visibility | |
| | MDA(H) | Full | ALS out | MDA(H) | | | |
| A | 1050 (610) | | | | 880 (440) | 1500m | A |
| B | | RVR 2300m | RVR 3000m | | 1160 (710) | 2400m | B |
| C | | RVR 2500m | RVR 3200m | | 1260 (810) | 3600m | C |
| D | | | | | 1350 (910) | 4300m | D |
| E | | | | | | | E |

INSTRUMENT APPROACH CHART
for MILITARY ACFT
TRANSITION LEVEL By ATC
TRANSITION ALT **5000(4566)**

AERODROME ELEV 447
HEIGHTS RELATED TO
THR RWY 32L - ELEV 434

| |
|--------------|
| TWR 120.405 |
| ATIS 120.755 |

ŠIAULIAI
VOR RWY 32L

TABULAR DESCRIPTION

| VOR INSTRUMENT APPROACH for MILITARY ACFT from IAFs (SAU, ODASA) | | |
|--|----------------------|----------------------------|
| FIX/POINTS | COORDINATES | FIX FORMATION |
| EVEGA (HLDG) | 55 52.87N 023 05.45E | BRG 081.02° / 11.00 NM SAU |
| ODASA (IAF) | 56 07.72N 023 24.76E | BRG 352.25° / 13.00 NM SAU |
| SAU (IAF) | 55 52.74N 023 24.98E | |
| IF | 55 42.35N 023 31.27E | BRG 331.35° / 11.00 NM SAU |
| FAF | 55 47.49N 023 28.17E | BRG 331.35° / 5.56 NM SAU |
| MAPt | 55 51.88N 023 25.51E | BRG 331.35° / 0.91 NM SAU |
| THR RWY 32L | 55 52.80N 023 24.42E | |
| Final approach descent angle: 3.00° | | |

INSTRUMENT APPROACH CHART
for MILITARY ACFT
TRANSITION LEVEL By ATC
TRANSITION ALT **5000(4553)**

AERODROME ELEV 447
HEIGHTS RELATED TO AD ELEV
THR RWY 14R - ELEV 440

| |
|--------------|
| TWR 120.405 |
| ATIS 120.755 |

ŠIAULIAI
TACAN RWY 14R

TABULAR DESCRIPTION

| TACAN INSTRUMENT APPROACH for MILITARY ACFT from IAFs (SQQ, IBUGA) | | |
|--|----------------------|----------------------------|
| FIX/POINTS | COORDINATES | FIX FORMATION |
| EVEGA (HLDG) | 55 52.87N 023 05.45E | BRG 077.32° / 10.54 NM SQQ |
| IBUGA (IAF) | 56 07.72N 023 24.76E | BRG 171.58° / 14.32 NM SQQ |
| SQQ TACAN (IAF) | 55 53.43N 023 24.14E | |
| IF | 56 02.50N 023 10.20E | BRG 129.55° / 12.00 NM SQQ |
| FAF | 55 58.64N 023 16.16E | BRG 129.55° / 6.89 NM SQQ |
| SDF | 55 55.86N 023 20.42E | BRG 129.55° / 3.22 NM SQQ |
| MAPt | 55 54.88N 023 21.93E | BRG 129.55° / 1.91 NM SQQ |
| THR RWY 14R | 55 54.25N 023 22.68E | |
| Final approach descent angle: 3.00° | | |

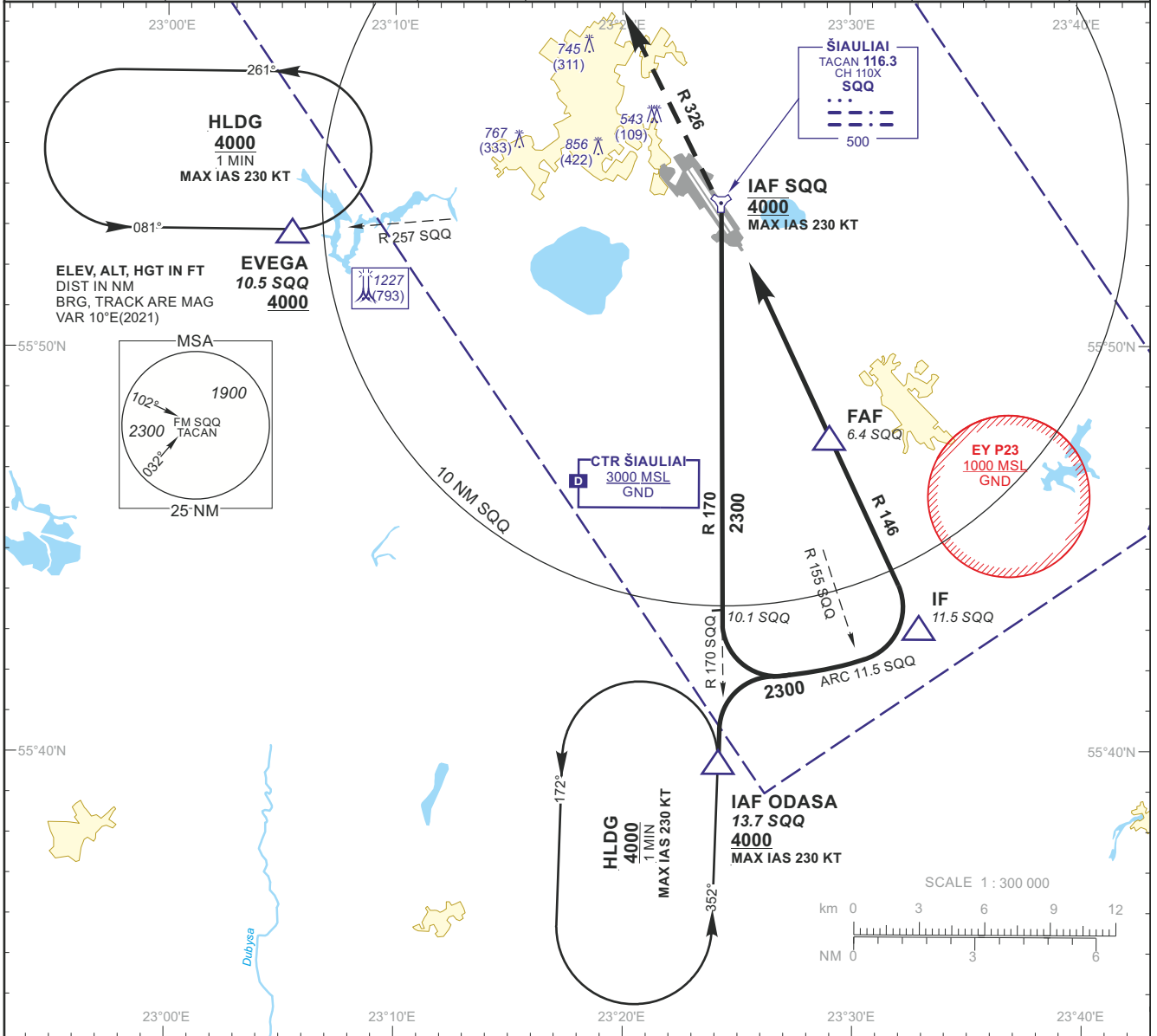
INSTRUMENT APPROACH CHART
for MILITARY ACFT
TRANSITION LEVEL By ATC
TRANSITION ALT **5000(4566)**

AERODROME ELEV 447
HEIGHTS RELATED TO
THR RWY 32L - ELEV 434

TWR 120.405
ATIS 120.755

ŠIAULIAI
TACAN RWY 32L

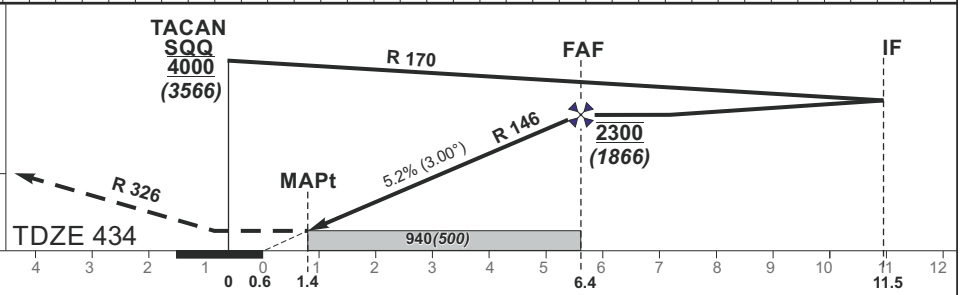
| | | | | | | | |
|---------------------|--------------------|-----------------|----------------------------|---------|-------------|------------|--------------|
| TACAN SQQ CH110X | APP COURSE 326° | FAF ALT 2300 | Descent GP 5.2% (3.00°) | MDA 940 | TDZE 434 | ALS OUT | LDA 10643 |
|---------------------|--------------------|-----------------|----------------------------|---------|-------------|------------|--------------|



MISSED APPROACH

Climb via SQQ, then on R 326 to 2000, then turn right with MIN bank angle 25° (MAX IAS 230 KT) to SQQ climbing to 4000.

Remarks:
Timing not authorized for defining the MAPt.



| GS | Kts | 80 | 100 | 120 | 140 | 160 | 180 | DIST SQQ | 6 | 5 | 4 | 3 | 2 |
|------------------------|---------|------|------|------|------|------|------|----------|--------|--------|--------|-------|-------|
| FAF - MAPt 5.0 NM | min:sec | 3:45 | 3:00 | 2:30 | 2:09 | 1:53 | 1:40 | Altitude | 2180 | 1870 | 1550 | 1240 | 920 |
| Rate of descent (5.2%) | ft/min | 415 | 520 | 625 | 730 | 835 | 940 | Height | (1746) | (1436) | (1116) | (806) | (486) |

| | STRAIGHT-IN APPROACH | | | CIRCLING APPROACH | | | | |
|---|----------------------|-----------|-----------|-------------------|------------|------------|-------|---|
| | TACAN | | | | | | | |
| | MDA(H) | Full | ALS out | MDA(H) | Visibility | | | |
| A | 940 (500) | RVR 1500m | RVR 1500m | 880 (440) | 1500m | A | | |
| B | | | | 1160 (710) | 2400m | B | | |
| C | | | | RVR 1900m | RVR 2700m | 1260 (810) | 3600m | C |
| D | | | | | | 1350 (910) | 4300m | D |
| E | | | | | | | | E |

INSTRUMENT APPROACH CHART
for MILITARY ACFT
TRANSITION LEVEL By ATC
TRANSITION ALT **5000(4566)**

AERODROME ELEV 447
HEIGHTS RELATED TO
THR RWY 32L - ELEV 434

| |
|--------------|
| TWR 120.405 |
| ATIS 120.755 |

ŠIAULIAI
TACAN RWY 32L

TABULAR DESCRIPTION

| TACAN INSTRUMENT APPROACH for MILITARY ACFT from IAFs (SQQ, ODASA) | | |
|--|----------------------|----------------------------|
| FIX/POINTS | COORDINATES | FIX FORMATION |
| EVEGA (HLDG) | 55 52.87N 023 05.45E | BRG 077.32° / 10.54 NM SQQ |
| ODASA (IAF) | 56 07.72N 023 24.76E | BRG 350.16° / 13.68 NM SQQ |
| SQQ TACAN (IAF) | 55 53.43N 023 24.14E | |
| IF | 55 42.98N 023 32.58E | BRG 325.71° / 11.50 NM SQQ |
| FAF | 55 47.63N 023 28.83E | BRG 325.71° / 6.38 NM SQQ |
| MAPt | 55 52.17N 023 25.17E | BRG 325.71° / 1.39 NM SQQ |
| THR RWY 32L | 55 52.80N 023 24.42E | |
| Final approach descent angle: 3.00° | | |