



## LIETUVOS RESPUBLIKA

Tel. +370 706 94 613 VĮ „ORO NAVIGACIJA“  
AFS: EYVNYOYX Oro navigacijos informacijos skyrius  
URL: www.ans.lt Balio Karvelio g. 25  
El.p. ais@ans.lt 02184 Vilnius, Lietuva

**AIP SUP: 006/2022**  
**Galioja nuo: 24-Mar-2022**  
**iki:**  
**Paskelbtas: 18-Mar-2022**

**S 006. ŠIAULIŲ AERODROMO ARTĖJIMO TŪPTI PAGAL PRIETAISUS ŽEMĖLAPIAI KARINIAMS ORLAIVIAMS**

Keičiasi šios AIP dalys: EYSA AD 2.24.

Šiame AIP papildyme pateikiama informacija apie naujus Šiaulių aerodromo Artėjimo tūpti pagal prietaisus žemėlapius RWY 14L/32R ir RWY 14R/32L, skirtus kariniams orlaiviams (žr. Priedus).

Panaikinti šie artėjimo tūpti pagal prietaisus žemėlapiai, skirti kariniams orlaiviams (žr. AIP EYSA AD 2.24):

- EYSA AD 2.24-60 Artėjimo tūpti pagal prietaisus žemėlapis kariniams orlaiviams – TACAN to ILS or LOC RWY 14L
- EYSA AD 2.24-61 Artėjimo tūpti pagal prietaisus žemėlapis kariniams orlaiviams – TACAN to ILS or LOC RWY 32R
- EYSA AD 2.24-62 Artėjimo tūpti pagal prietaisus žemėlapis kariniams orlaiviams – VOR RWY 14R
- EYSA AD 2.24-63 Artėjimo tūpti pagal prietaisus žemėlapis kariniams orlaiviams – VOR RWY 32L
- EYSA AD 2.24-64 Artėjimo tūpti pagal prietaisus žemėlapis kariniams orlaiviams – TACAN RWY 14L
- EYSA AD 2.24-65 Artėjimo tūpti pagal prietaisus žemėlapis kariniams orlaiviams – TACAN RWY 32R
- EYSA AD 2.24-66 Artėjimo tūpti pagal prietaisus žemėlapis kariniams orlaiviams – TACAN RWY 14R
- EYSA AD 2.24-67 Artėjimo tūpti pagal prietaisus žemėlapis kariniams orlaiviams – TACAN RWY 32L

Nauji žemėlapiai:

- Priedas 1. Artėjimo tūpti pagal prietaisus žemėlapis kariniams orlaiviams – ILS Z or LOC Z RWY 14L (MIL)
- Priedas 2. Artėjimo tūpti pagal prietaisus žemėlapis kariniams orlaiviams – ILS Z or LOC Z RWY 32R (MIL)
- Priedas 3. Artėjimo tūpti pagal prietaisus žemėlapis kariniams orlaiviams – ILS Y or LOC Y RWY 14L (MIL)
- Priedas 4. Artėjimo tūpti pagal prietaisus žemėlapis kariniams orlaiviams – ILS Y or LOC Y RWY 32R (MIL)
- Priedas 5. Artėjimo tūpti pagal prietaisus žemėlapis kariniams orlaiviams – TACAN RWY 14L
- Priedas 6. Artėjimo tūpti pagal prietaisus žemėlapis kariniams orlaiviams – TACAN RWY 32R
- Priedas 7. Artėjimo tūpti pagal prietaisus žemėlapis kariniams orlaiviams – VOR RWY 14R
- Priedas 8. Artėjimo tūpti pagal prietaisus žemėlapis kariniams orlaiviams – VOR RWY 32L
- Priedas 9. Artėjimo tūpti pagal prietaisus žemėlapis kariniams orlaiviams – TACAN RWY 14R
- Priedas 10. Artėjimo tūpti pagal prietaisus žemėlapis kariniams orlaiviams – TACAN RWY 32L

Šis AIP papildymas galios tol, kol informacija bus įtraukta į AIP.

**-PABAIGA-**

SPECIALUSIS TUŠČIAS PUSLAPIS



INSTRUMENT APPROACH CHART  
for MILITARY ACFT  
TRANSITION LEVEL By ATC  
TRANSITION ALT **5000(4553)**

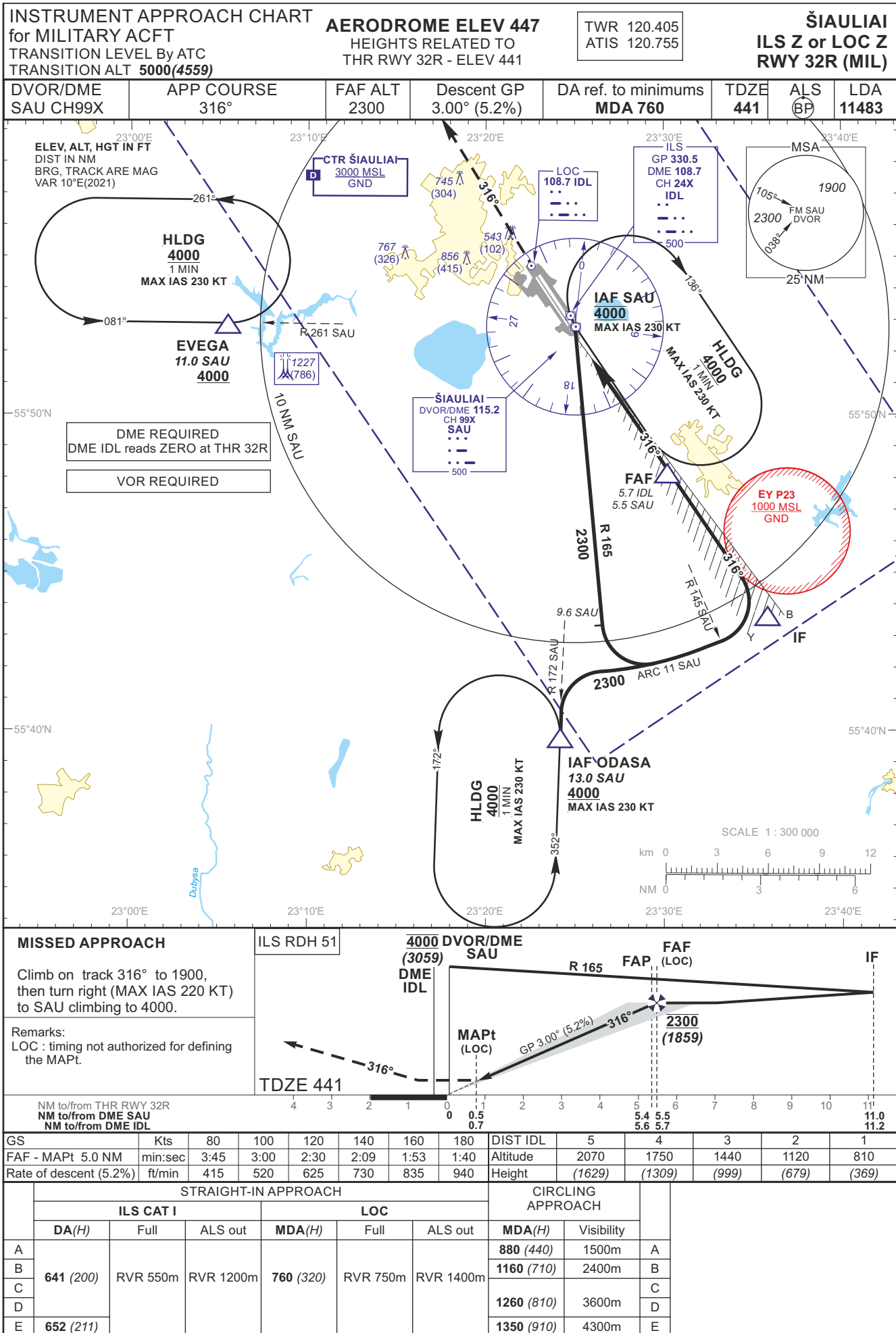
**AERODROME ELEV 447**  
HEIGHTS RELATED TO  
THR RWY 14L - ELEV 447

TWR 120.405
ATIS 120.755

**ŠIAULIAI**  
**ILS Z or LOC Z**  
**RWY 14L (MIL)**

TABULAR DESCRIPTION

ILS or LOC INSTRUMENT APPROACH for MILITARY ACFT from IAFs (SAU, IBUGA)		
FIX/POINTS	COORDINATES	FIX FORMATION
EVEGA (HLDG)	55 52.87N 023 05.45E	BRG 081.02° / 11.00 NM SAU
IBUGA (IAF)	56 07.72N 023 24.76E	BRG 169.73° / 15.00 NM SAU
SAU (IAF)	55 52.74N 023 24.98E	
IF	56 03.45N 023 11.91E	BRG 136.35° / 10.92 NM ISZ ; 13.01 NM SAU
FAF	55 59.14N 023 17.09E	BRG 136.35° / 5.71 NM ISZ ; 7.80 NM SAU
FAP	55 59.02N 023 17.24E	BRG 136.35° / 5.56 NM ISZ ; 7.65 NM SAU
SDF	55 56.89N 023 19.80E	BRG 136.35° / 2.99 NM ISZ ; 5.08 NM SAU
MAPt	55 55.00N 023 22.07E	BRG 136.35° / 0.70 NM ISZ ; 2.79 NM SAU
THR RWY 14L	55 54.41N 023 22.76E	
DME ISZ	55 54.30N 023 23.04E	
LOC ISZ	55 52.68N 023 24.84E	
Final approach (LOC) descent angle: 3.00°		



INSTRUMENT APPROACH CHART  
for MILITARY ACFT  
TRANSITION LEVEL By ATC  
TRANSITION ALT **5000(4559)**

**AERODROME ELEV 447**  
HEIGHTS RELATED TO  
THR RWY 32R - ELEV 441

TWR 120.405  
ATIS 120.755

**ŠIAULIAI**  
**ILS Z or LOC Z**  
**RWY 32R (MIL)**

TABULAR DESCRIPTION

ILS or LOC INSTRUMENT APPROACH for MILITARY ACFT from IAFs (SAU, ODASA)		
FIX/POINTS	COORDINATES	FIX FORMATION
EVEGA (HLDG)	55 52.87N 023 05.45E	BRG 081.02° / 11.00 NM SAU
ODASA (IAF)	56 07.72N 023 24.76E	BRG 352.25° / 13.00 NM SAU
SAU (IAF)	55 52.74N 023 24.98E	
IF	55 43.56N 023 35.68E	BRG 316.29° / 11.20 NM IDL ; 11.00 NM SAU
FAF	55 48.10N 023 30.30E	BRG 316.29° / 5.73 NM IDL ; 5.53 NM SAU
FAP	55 48.21N 023 30.16E	BRG 316.29° / 5.59 NM IDL ; 5.40 NM SAU
MAPt	55 52.27N 023 25.33E	BRG 316.29° / 0.70 NM IDL ; 0.51 NM SAU
THR RWY 32R	55 52.85N 023 24.64E	
DME IDL	55 53.02N 023 24.58E	
LOC IDL	55 54.58N 023 22.57E	
Final approach (LOC) descent angle: 3.00°		



INSTRUMENT APPROACH CHART  
for MILITARY ACFT  
TRANSITION LEVEL By ATC  
TRANSITION ALT **5000(4553)**

**AERODROME ELEV 447**  
HEIGHTS RELATED TO  
THR RWY 14L - ELEV 447

TWR 120.405
ATIS 120.755

**ŠIAULIAI**  
**ILS Y or LOC Y**  
**RWY 14L (MIL)**

TABULAR DESCRIPTION

ILS or LOC INSTRUMENT APPROACH for MILITARY ACFT from IAFs (SQQ, IBUGA)		
FIX/POINTS	COORDINATES	FIX FORMATION
EVEGA (HLDG)	55 52.87N 023 05.45E	BRG 077.32° / 10.54 NM SQQ
IBUGA (IAF)	56 07.72N 023 24.76E	BRG 171.58° / 14.32 NM SQQ
SQQ TACAN (IAF)	55 53.43N 023 24.14E	
IF	56 03.31N 023 12.07E	BRG 136.35° / 10.75 NM ISZ ; 12.00 NM SQQ
FAF	55 59.14N 023 17.09E	BRG 136.35° / 5.71 NM ISZ ; 6.97 NM SQQ
FAP	55 59.02N 023 17.24E	BRG 136.35° / 5.56 NM ISZ ; 6.82 NM SQQ
SDF	55 56.89N 023 19.80E	BRG 136.35° / 2.99 NM ISZ ; 4.24 NM SQQ
MAPt	55 55.00N 023 22.07E	BRG 136.35° / 0.70 NM ISZ ; 1.96 NM SQQ
THR RWY 14L	55 54.41N 023 22.76E	
DME ISZ	55 54.30N 023 23.04E	
LOC ISZ	55 52.68N 023 24.84E	
Final approach (LOC) descent angle: 3.00°		



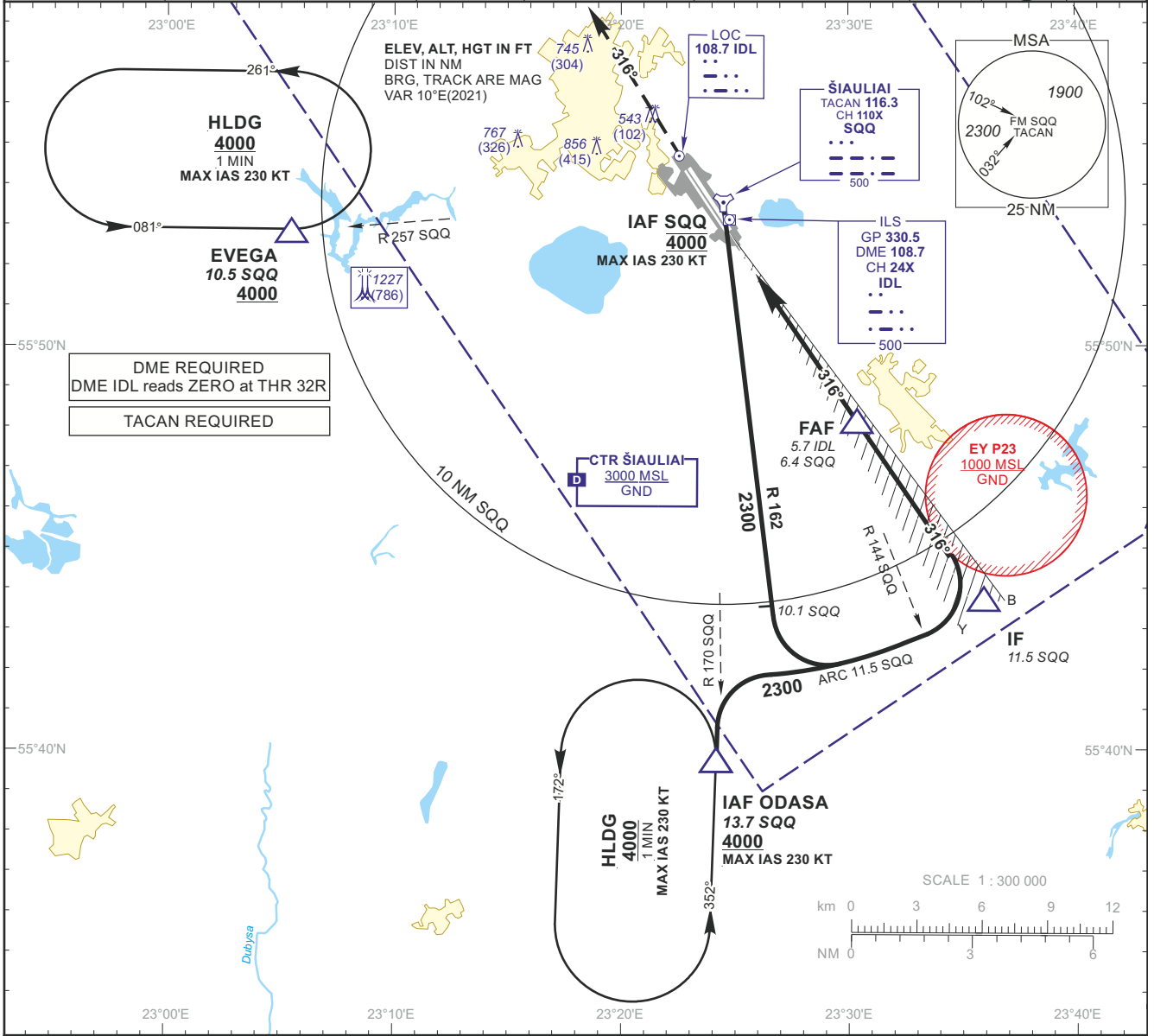
**INSTRUMENT APPROACH CHART**  
for MILITARY ACFT  
TRANSITION LEVEL By ATC  
TRANSITION ALT **5000(4559)**

**AERODROME ELEV 447**  
HEIGHTS RELATED TO  
THR RWY 32R - ELEV 441

TWR 120.405  
ATIS 120.755

**ŠIAULIAI**  
ILS Y or LOC Y  
RWY 32R (MIL)

TACAN SQQ CH110X	APP COURSE 316°	FAF ALT 2300	Descent GP 3.00° (5.2%)	DA ref. to minimums <b>MDA 760</b>	TDZE 441	ALS (BP)	LDA 11483
---------------------	--------------------	-----------------	----------------------------	---------------------------------------	-------------	-------------	--------------



**MISSED APPROACH**

Climb on track 316° to 1900, then turn right (MAX IAS 220 KT) to SQQ climbing to 4000.

Remarks:  
LOC : timing not authorized for defining the MAPt.

ILS RDH 51

TACAN SQQ 4000 (3059)

DME IDL

MAPt (LOC)

TDZE 441

R 162 FAF FAF (LOC) IF

GP 3.00° (5.2%) 316°

2300 (1859)

4 3 2 1 0 0.6 1.3 2 3 4 5 6 6.2 6.4 7 8 9 10 11 11.5 12

0 0.7 5.6 5.7 10.9

GS	Kts	80	100	120	140	160	180	DIST IDL	5	4	3	2	1
FAF - MAPt 5.0 NM	min:sec	3:45	3:00	2:30	2:09	1:53	1:40	Altitude	2070	1750	1440	1120	810
Rate of descent (5.2%)	ft/min	415	520	625	730	835	940	Height	(1629)	(1309)	(999)	(679)	(369)

	STRAIGHT-IN APPROACH						CIRCLING APPROACH		A
	ILS CAT I			LOC			MDA(H)	Visibility	
	DA(H)	Full	ALS out	MDA(H)	Full	ALS out			
A	641 (200)	RVR 550m	RVR 1200m	760 (320)	RVR 750m	RVR 1400m	880 (440)	1500m	A
B							1160 (710)	2400m	B
C							1260 (810)	3600m	C
D							1350 (910)	4300m	D
E							652 (211)		

INSTRUMENT APPROACH CHART  
for MILITARY ACFT  
TRANSITION LEVEL By ATC  
TRANSITION ALT **5000(4559)**

**AERODROME ELEV 447**  
HEIGHTS RELATED TO  
THR RWY 32R - ELEV 441

TWR 120.405
ATIS 120.755

**ŠIAULIAI**  
**ILS Y or LOC Y**  
**RWY 32R (MIL)**

TABULAR DESCRIPTION

ILS or LOC INSTRUMENT APPROACH for MILITARY ACFT from IAFs (SQQ, ODASA)		
FIX/POINTS	COORDINATES	FIX FORMATION
EVEGA (HLDG)	55 52.87N 023 05.45E	BRG 077.32° / 10.54 NM SQQ
ODASA (IAF)	56 07.72N 023 24.76E	BRG 350.16° / 13.68 NM SQQ
SQQ TACAN (IAF)	55 53.43N 023 24.14E	
IF	55 43.84N 023 35.35E	BRG 316.29° / 10.87 NM IDL ; 11.50 NM SQQ
FAF	55 48.10N 023 30.30E	BRG 316.29° / 5.73 NM IDL ; 6.37 NM SQQ
FAP	55 48.21N 023 30.16E	BRG 316.29° / 5.59 NM IDL ; 6.23 NM SQQ
MAPt	55 52.27N 023 25.33E	BRG 316.29° / 0.70 NM IDL ; 1.34 NM SQQ
THR RWY 32R	55 52.85N 023 24.64E	
DME IDL	55 53.02N 023 24.58E	
LOC IDL	55 54.58N 023 22.57E	
Final approach (LOC) descent angle: 3.00°		



INSTRUMENT APPROACH CHART  
for MILITARY ACFT  
TRANSITION LEVEL By ATC  
TRANSITION ALT **5000(4553)**

**AERODROME ELEV 447**  
HEIGHTS RELATED TO AD ELEV  
THR RWY 14L - ELEV 447

TWR 120.405  
ATIS 120.755

**ŠIAULIAI**  
**TACAN RWY 14L**

TABULAR DESCRIPTION

TACAN INSTRUMENT APPROACH for MILITARY ACFT from IAFs (SQQ, IBUGA)		
FIX/POINTS	COORDINATES	FIX FORMATION
EVEGA (HLDG)	55 52.87N 023 05.45E	BRG 077.32° / 10.54 NM SQQ
IBUGA (IAF)	56 07.72N 023 24.76E	BRG 171.58° / 14.32 NM SQQ
SQQ TACAN (IAF)	55 53.43N 023 24.14E	
IF	56 03.05N 023 11.41E	BRG 133.70° / 12.01 NM SQQ
FAF	55 59.01N 023 16.76E	BRG 133.70° / 6.97 NM SQQ
SDF	55 56.07N 023 20.66E	BRG 133.70° / 3.3 NM SQQ
MAPt	55 54.74N 023 22.42E	BRG 133.70° / 1.63 NM SQQ
THR RWY 14L	55 54.41N 023 22.76E	
Final approach descent angle: 3.00°		

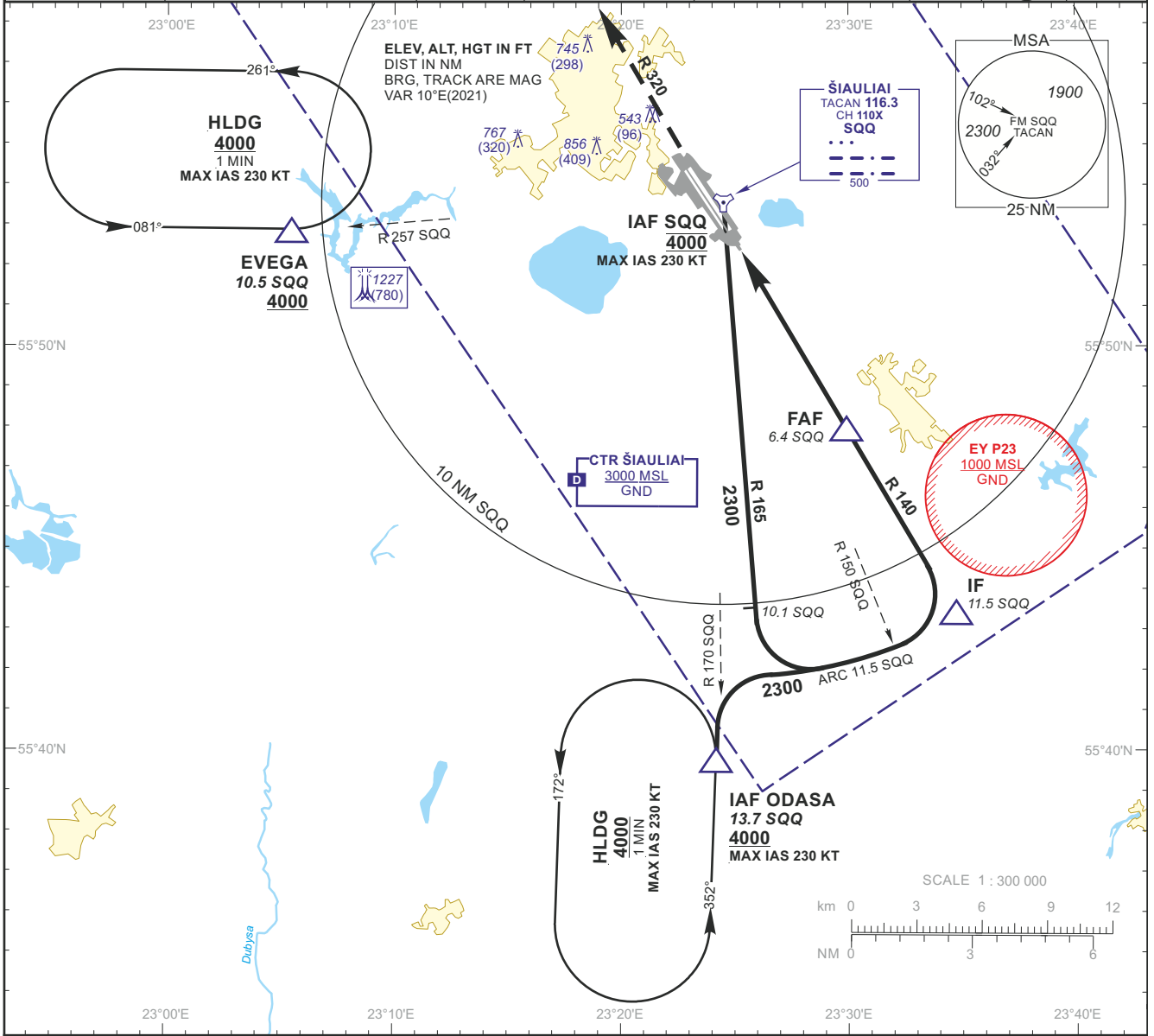
**INSTRUMENT APPROACH CHART**  
for MILITARY ACFT  
TRANSITION LEVEL By ATC  
TRANSITION ALT **5000(4553)**

**AERODROME ELEV 447**  
HEIGHTS RELATED TO AD ELEV  
THR RWY 32R - ELEV 441

TWR 120.405  
ATIS 120.755

**ŠIAULIAI**  
**TACAN RWY 32R**

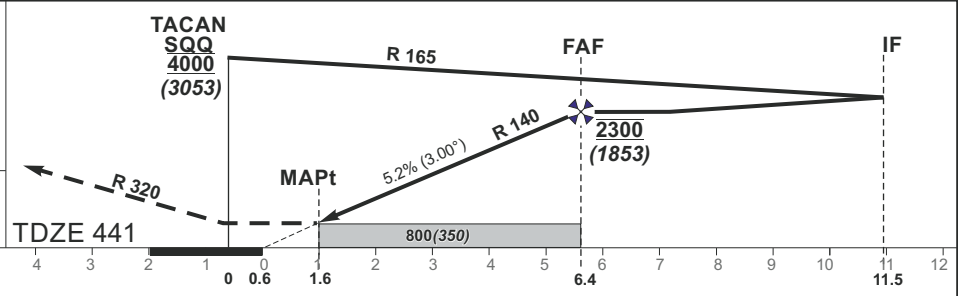
TACAN SQQ CH110X	APP COURSE 320°	FAF ALT 2300	Descent GP 5.2% (3.00°)	MDA 800	TDZE 441	ALS BP	LDA 11483
---------------------	--------------------	-----------------	----------------------------	---------	-------------	-----------	--------------



**MISSED APPROACH**

Climb via SQQ, then on R 320 to 2000, then turn right with MIN bank angle 25°(MAX IAS 230 KT) to SQQ climbing to 4000.

Remarks:  
Timing not authorized for defining the MAPt.



GS	Kts	80	100	120	140	160	180	DIST SQQ	6	5	4	3	2
FAF - MAPt 4.8 NM	min:sec	3:36	2:53	2:24	2:03	1:48	1:36	Altitude	2190	1870	1560	1240	920
Rate of descent (5.2%)	ft/min	415	520	625	730	835	940	Height	(1743)	(1423)	(1113)	(793)	(473)

	STRAIGHT-IN APPROACH			CIRCLING APPROACH			
	TACAN						
	MDA(H)	Full	ALS out	MDA(H)	Visibility		
A	800 (350)	RVR 900m	RVR 1500m	880 (440)	1500m	A	
B				1160 (710)	2400m	B	
C				RVR 1600m	1260 (810)	3600m	C
D					1350 (910)	4300m	D
E						E	

INSTRUMENT APPROACH CHART  
for MILITARY ACFT  
TRANSITION LEVEL By ATC  
TRANSITION ALT **5000(4553)**

**AERODROME ELEV 447**  
HEIGHTS RELATED TO AD ELEV  
THR RWY 32R - ELEV 441

TWR 120.405  
ATIS 120.755

**ŠIAULIAI**  
**TACAN RWY 32R**

TABULAR DESCRIPTION

TACAN INSTRUMENT APPROACH for MILITARY ACFT from IAFs (SQQ, ODASA)		
FIX/POINTS	COORDINATES	FIX FORMATION
EVEGA (HLDG)	55 52.87N 023 05.45E	BRG 077.32° / 10.54 NM SQQ
ODASA (IAF)	56 07.72N 023 24.76E	BRG 350.16° / 13.68 NM SQQ
SQQ TACAN (IAF)	55 53.43N 023 24.14E	
IF	55 43.49N 023 34.36E	BRG 320.05° / 11.50 NM SQQ
FAF	55 47.93N 023 29.81E	BRG 320.05° / 6.37 NM SQQ
MAPt	55 52.04N 023 25.58E	BRG 320.05° / 1.61 NM SQQ
THR RWY 32R	55 52.85N 023 24.64E	
Final approach descent angle: 3.00°		



INSTRUMENT APPROACH CHART  
for MILITARY ACFT  
TRANSITION LEVEL By ATC  
TRANSITION ALT **5000(4553)**

**AERODROME ELEV 447**  
HEIGHTS RELATED TO AD ELEV  
THR RWY 14R ELEV 440

TWR 120.405
ATIS 120.755

**ŠIAULIAI  
VOR RWY 14R**

TABULAR DESCRIPTION

VOR INSTRUMENT APPROACH for MILITARY ACFT from IAFs (SAU, IBUGA)		
FIX/POINTS	COORDINATES	FIX FORMATION
EVEGA (HLDG)	55 52.87N 023 05.45E	BRG 081.02° / 11.00 NM SAU
IBUGA (IAF)	56 07.72N 023 24.76E	BRG 169.73° / 15.00 NM SAU
SAU (IAF)	55 52.74N 023 24.98E	
IF	56 02.85N 023 10.47E	BRG 131.46° / 13.01 NM SAU
FAF	55 58.75N 023 16.38E	BRG 131.46° / 7.72 NM SAU
SDF	55 55.79N 023 20.62E	BRG 131.46° / 3.92 NM SAU
MAPt	55 54.90N 023 21.90E	BRG 131.46° / 2.77 NM SAU
THR RWY 14R	55 54.25N 023 22.68E	
Final approach descent angle: 3.00°		



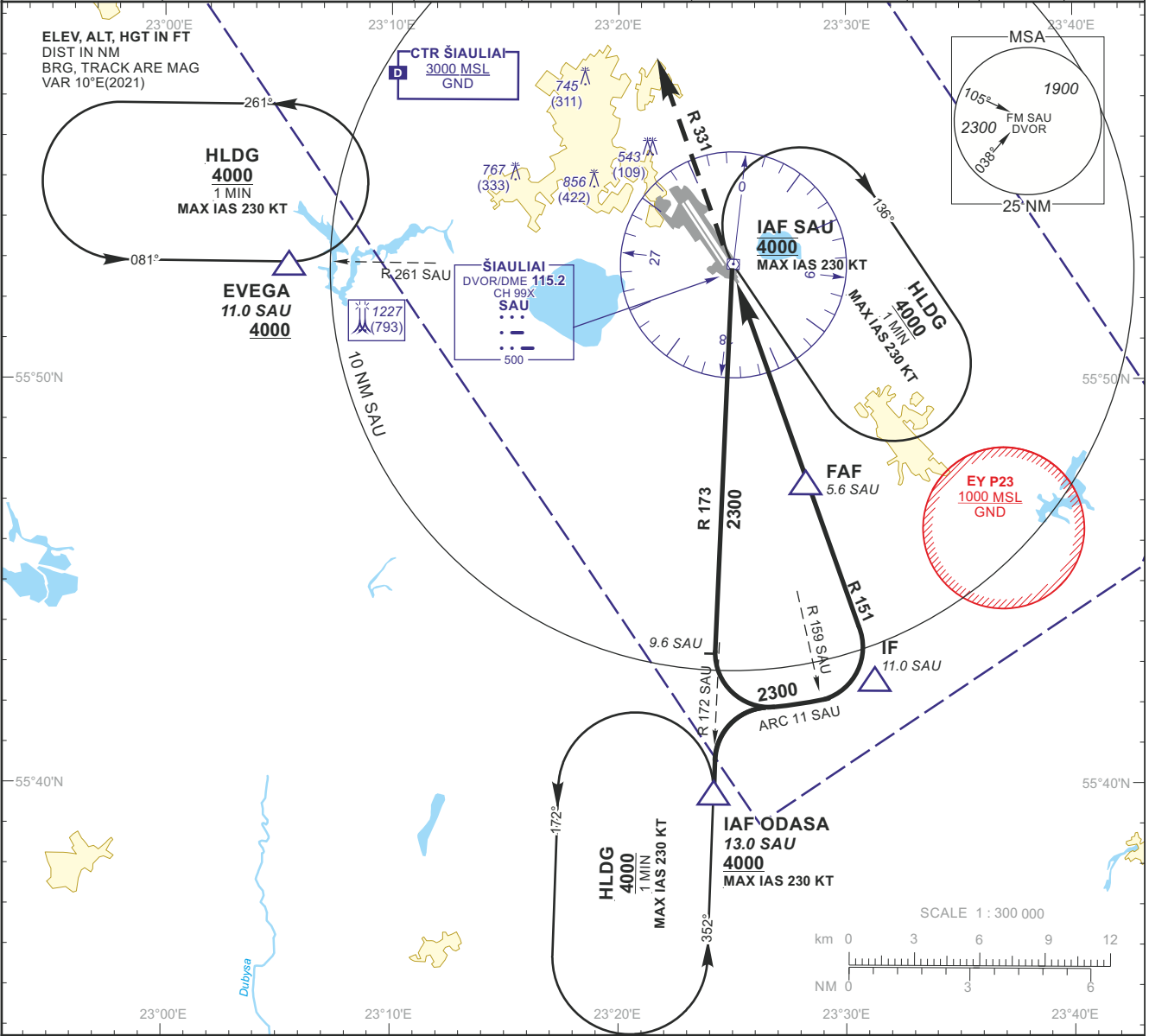
**INSTRUMENT APPROACH CHART**  
for MILITARY ACFT  
TRANSITION LEVEL By ATC  
TRANSITION ALT **5000(4566)**

**AERODROME ELEV 447**  
HEIGHTS RELATED TO  
THR RWY 32L - ELEV 434

TWR 120.405  
ATIS 120.755

**ŠIAULIAI  
VOR RWY 32L**

DVOR/DME SAU CH99X	APP COURSE 331°	FAF ALT 2300	Descent GP 5.2% (3.00°)	MDA 1050	TDZE 434	ALS OUT	LDA 10643
-----------------------	--------------------	-----------------	----------------------------	----------	-------------	------------	--------------

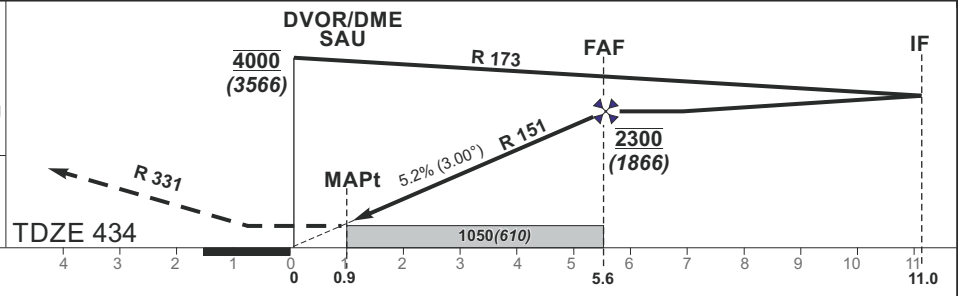


**MISSED APPROACH**

Climb via SAU, then on R 331 to 2000, then turn right with MIN bank angle 25° (MAX IAS 230 KT) to SAU climbing to 4000.

Remarks:  
Timing not authorized for defining the MAPt.

NM to/from THR RWY 32L  
NM to/from DME SAU



GS	Kts	80	100	120	140	160	180	DIST SAU	5	4	3	2
FAF - MAPt 4.7 NM	min:sec	3:31	2:49	2:21	2:01	1:46	1:34	Altitude	2130	1810	1500	1180
Rate of descent (5.2%)	ft/min	415	520	625	730	835	940	Height	(1696)	(1376)	(1066)	(746)

	STRAIGHT-IN APPROACH			CIRCLING APPROACH		
	VOR			MDA(H)	Visibility	
	MDA(H)	Full	ALS out			
A	1050 (610)	RVR 2300m	RVR 3000m	880 (440)	1500m	A
B				1160 (710)	2400m	B
C				1260 (810)	3600m	C
D				1350 (910)	4300m	D
E						

INSTRUMENT APPROACH CHART  
for MILITARY ACFT  
TRANSITION LEVEL By ATC  
TRANSITION ALT **5000(4566)**

**AERODROME ELEV 447**  
HEIGHTS RELATED TO  
THR RWY 32L - ELEV 434

TWR 120.405  
ATIS 120.755

**ŠIAULIAI**  
**VOR RWY 32L**

TABULAR DESCRIPTION

VOR INSTRUMENT APPROACH for MILITARY ACFT from IAFs (SAU, ODASA)		
FIX/POINTS	COORDINATES	FIX FORMATION
EVEGA (HLDG)	55 52.87N 023 05.45E	BRG 081.02° / 11.00 NM SAU
ODASA (IAF)	56 07.72N 023 24.76E	BRG 352.25° / 13.00 NM SAU
SAU (IAF)	55 52.74N 023 24.98E	
IF	55 42.35N 023 31.27E	BRG 331.35° / 11.00 NM SAU
FAF	55 47.49N 023 28.17E	BRG 331.35° / 5.56 NM SAU
MAPt	55 51.88N 023 25.51E	BRG 331.35° / 0.91 NM SAU
THR RWY 32L	55 52.80N 023 24.42E	
Final approach descent angle: 3.00°		



INSTRUMENT APPROACH CHART  
for MILITARY ACFT  
TRANSITION LEVEL By ATC  
TRANSITION ALT **5000(4553)**

**AERODROME ELEV 447**  
HEIGHTS RELATED TO AD ELEV  
THR RWY 14R - ELEV 440

TWR 120.405  
ATIS 120.755

**ŠIAULIAI**  
**TACAN RWY 14R**

TABULAR DESCRIPTION

TACAN INSTRUMENT APPROACH for MILITARY ACFT from IAFs (SQQ, IBUGA)		
FIX/POINTS	COORDINATES	FIX FORMATION
EVEGA (HLDG)	55 52.87N 023 05.45E	BRG 077.32° / 10.54 NM SQQ
IBUGA (IAF)	56 07.72N 023 24.76E	BRG 171.58° / 14.32 NM SQQ
SQQ TACAN (IAF)	55 53.43N 023 24.14E	
IF	56 02.50N 023 10.20E	BRG 129.55° / 12.00 NM SQQ
FAF	55 58.64N 023 16.16E	BRG 129.55° / 6.89 NM SQQ
SDF	55 55.86N 023 20.42E	BRG 129.55° / 3.22 NM SQQ
MAPt	55 54.88N 023 21.93E	BRG 129.55° / 1.91 NM SQQ
THR RWY 14R	55 54.25N 023 22.68E	
Final approach descent angle: 3.00°		

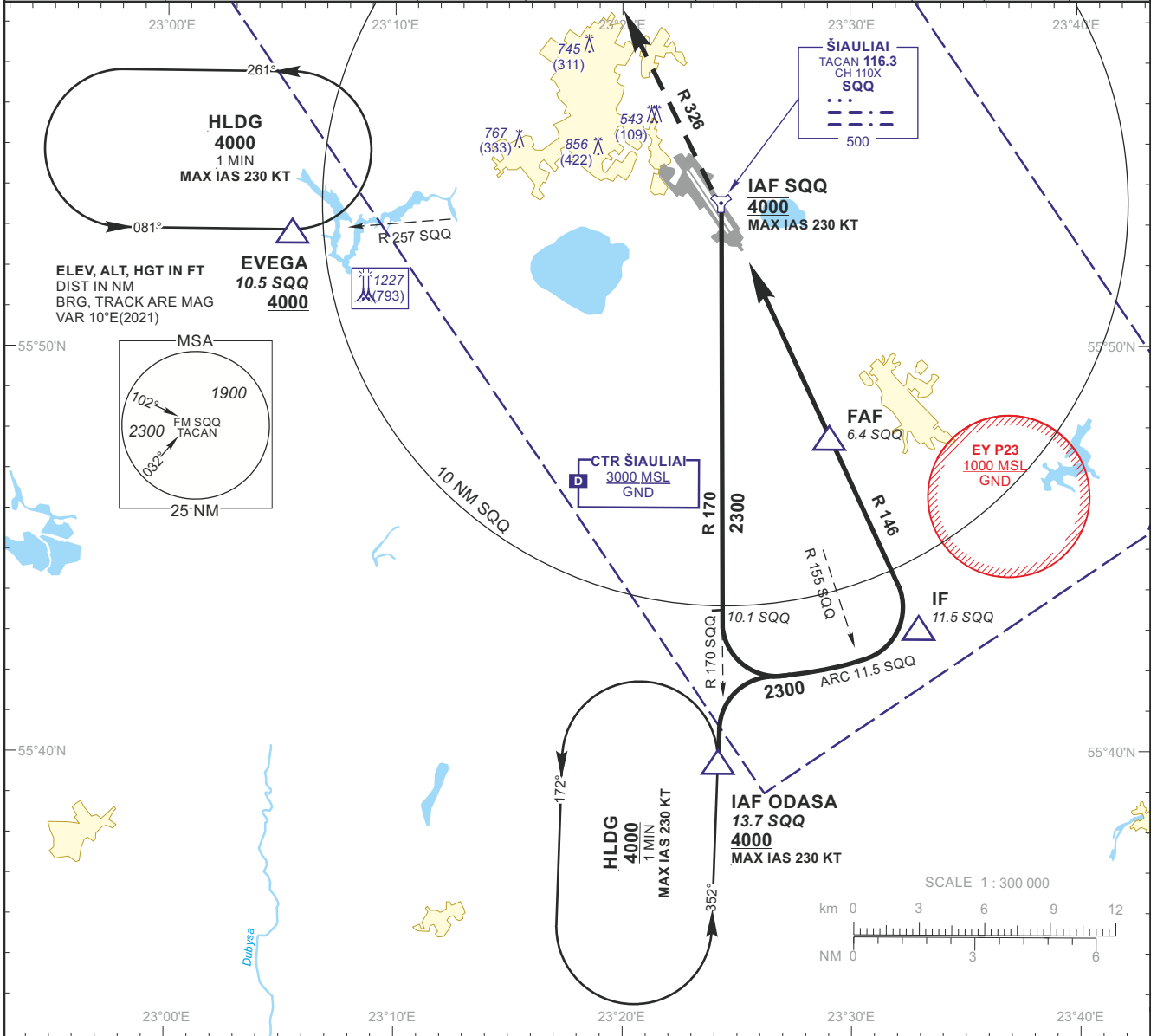
**INSTRUMENT APPROACH CHART**  
for MILITARY ACFT  
TRANSITION LEVEL By ATC  
TRANSITION ALT **5000(4566)**

**AERODROME ELEV 447**  
HEIGHTS RELATED TO  
THR RWY 32L - ELEV 434

TWR 120.405  
ATIS 120.755

**ŠIAULIAI**  
**TACAN RWY 32L**

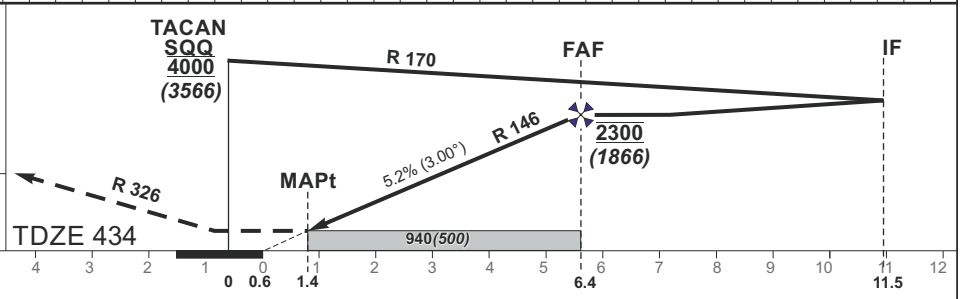
TACAN SQQ CH110X	APP COURSE 326°	FAF ALT 2300	Descent GP 5.2% (3.00°)	MDA 940	TDZE 434	ALS OUT	LDA 10643
---------------------	--------------------	-----------------	----------------------------	---------	-------------	------------	--------------



**MISSED APPROACH**

Climb via SQQ, then on R 326 to 2000, then turn right with MIN bank angle 25° (MAX IAS 230 KT) to SQQ climbing to 4000.

Remarks:  
Timing not authorized for defining the MAPt.



GS	Kts	80	100	120	140	160	180	DIST SQQ	6	5	4	3	2	
FAF - MAPt	5.0 NM	min:sec	3:45	3:00	2:30	2:09	1:53	1:40	Altitude	2180	1870	1550	1240	920
Rate of descent (5.2%)	ft/min	415	520	625	730	835	940	Height	(1746)	(1436)	(1116)	(806)	(486)	

	STRAIGHT-IN APPROACH			CIRCLING APPROACH				
	TACAN							
	MDA(H)	Full	ALS out	MDA(H)	Visibility			
A	940 (500)	RVR 1500m	RVR 1500m	880 (440)	1500m	A		
B				1160 (710)	2400m	B		
C				RVR 1900m	RVR 2700m	1260 (810)	3600m	C
D						1350 (910)	4300m	D
E								E

INSTRUMENT APPROACH CHART  
for MILITARY ACFT  
TRANSITION LEVEL By ATC  
TRANSITION ALT **5000(4566)**

**AERODROME ELEV 447**  
HEIGHTS RELATED TO  
THR RWY 32L - ELEV 434

TWR 120.405  
ATIS 120.755

**ŠIAULIAI**  
**TACAN RWY 32L**

TABULAR DESCRIPTION

TACAN INSTRUMENT APPROACH for MILITARY ACFT from IAFs (SQQ, ODASA)		
FIX/POINTS	COORDINATES	FIX FORMATION
EVEGA (HLDG)	55 52.87N 023 05.45E	BRG 077.32° / 10.54 NM SQQ
ODASA (IAF)	56 07.72N 023 24.76E	BRG 350.16° / 13.68 NM SQQ
SQQ TACAN (IAF)	55 53.43N 023 24.14E	
IF	55 42.98N 023 32.58E	BRG 325.71° / 11.50 NM SQQ
FAF	55 47.63N 023 28.83E	BRG 325.71° / 6.38 NM SQQ
MAPt	55 52.17N 023 25.17E	BRG 325.71° / 1.39 NM SQQ
THR RWY 32L	55 52.80N 023 24.42E	
Final approach descent angle: 3.00°		